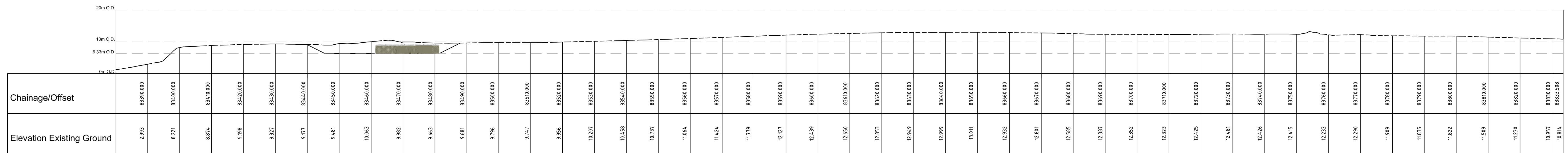
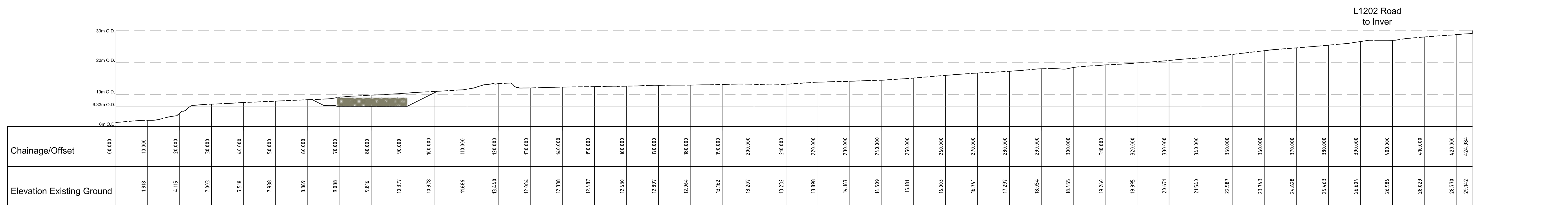


LOCATION PLAN
Scale: 1:2500

"Ordnance Survey Ireland Licence No. EN 0005008
Copyright Government of Ireland"



SECTION A - A
Not to scale



SECTION B - B
Not to scale

Client:



Shell E&P Ireland Limited
Corrib House, 52 Leeson Street Lower,
Dublin 2, Republic of Ireland.



RPS, West Pier Business Campus
Dun Laoghaire, Co. Dublin, Ireland.
T: +353 1 4882900 - F: +353 1 2835676
E: ireland@rpsgroup.com W: www.rpsgroup.com/ireland

NOTES

- This drawing is the property of RPS, it is a confidential document and must not be copied, used, or its content divulged without prior written consent.
- All Levels refer to Ordnance Survey Datum, Malin Head.
- DO NOT SCALE, use figured dimensions only, if in doubt ask.

P02	02/02/09	ISSUE FOR PLANNING APPLICATION	TD	KMcM	CB	JvdW
P01	28/03/08	ISSUE FOR PLANNING APPLICATION	TD	GB	CB	JvdW
R10	18/03/08	ISSUE FOR COMMENT	TD	GB	CB	JvdW
R09	10/03/08	ISSUE FOR COMMENT	TD	GB	CB	JvdW
R08	22/02/08	ISSUE FOR COMMENT	TD	GB	CB	JvdW
R07	13/02/08	ISSUE FOR COMMENT	TD	GB	CB	JvdW
REV	DATE	REVISION	BY	CHK	ENG	CL'NT
DRAWING REVISIONS						

Project:

CORRIB ONSHORE PIPELINE

Title:

**LANDFALL VALVE INSTALLATION
SITE AREA
LONG SECTIONS**

Drawn by:	TD	Job No:	MDR0470
Checked by:	GB	File No:	COR25MDR0470DG2106
Approved by:	CB	Drg. No:	DG2106
Scale:	As shown	Rev:	P02
Date:	02.02.2009		