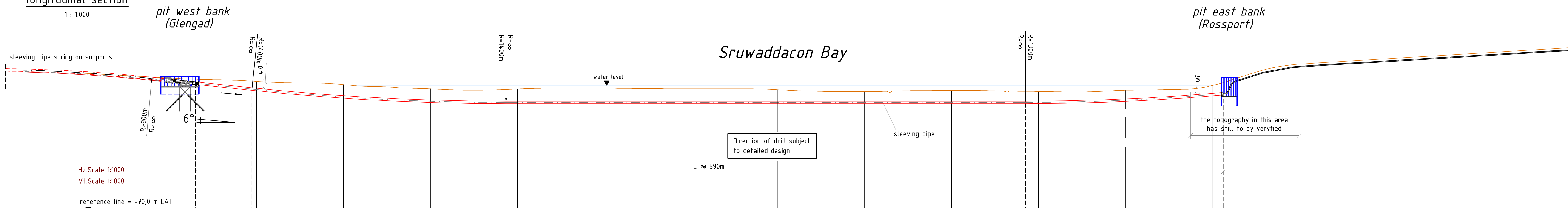


TYPICAL MICRO-TUNNELING METHOD - LOWER BAY CROSSING

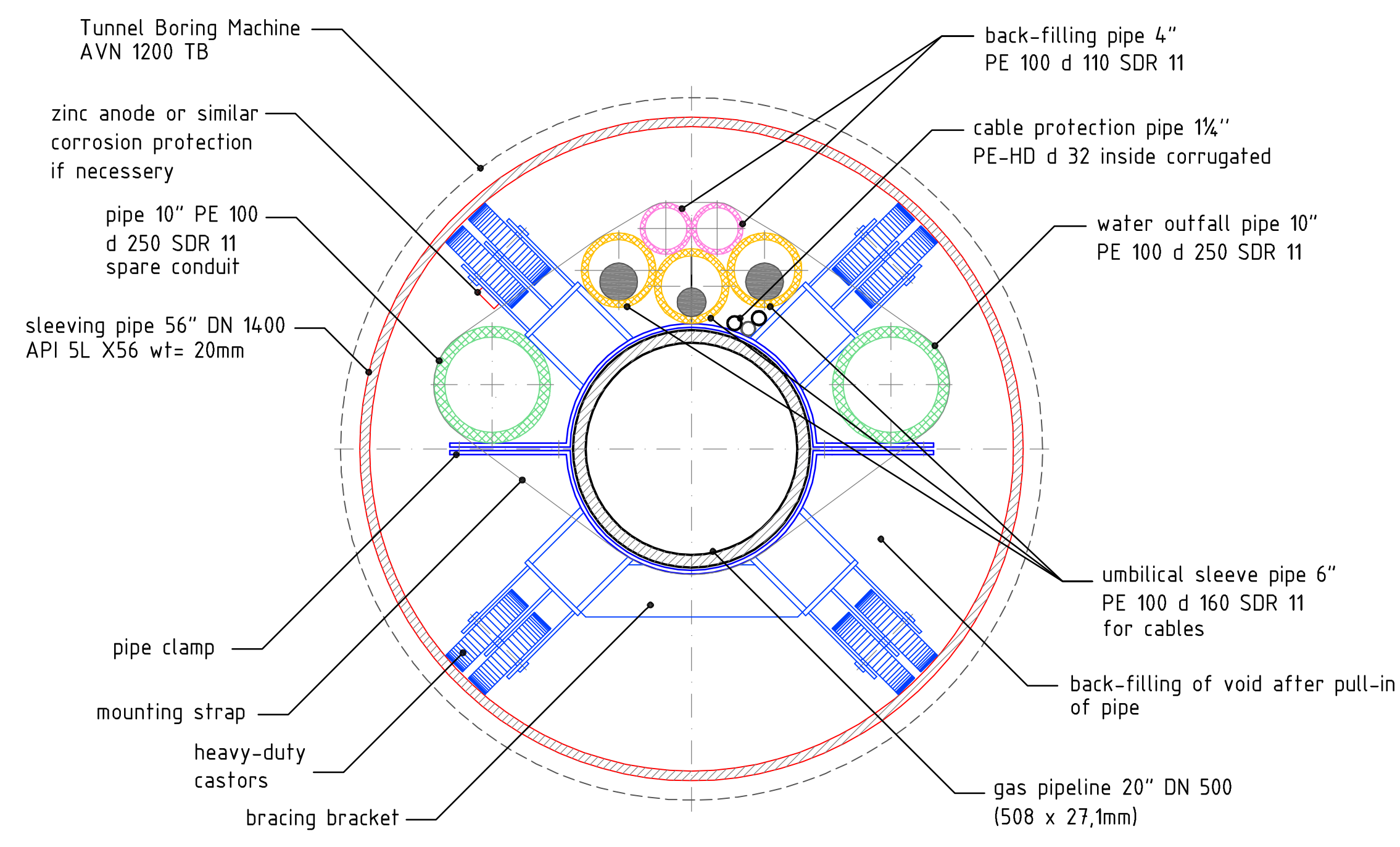
longitudinal section
1 : 1000



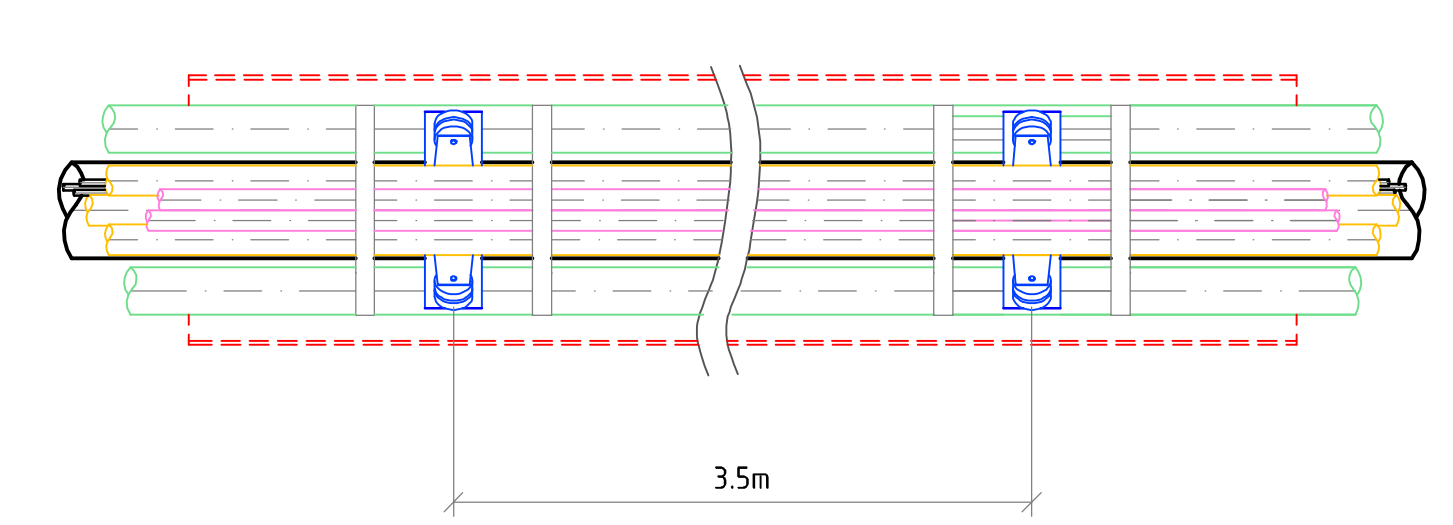
Vertical profiles subject to detailed design and geotechnical conditions.

Chainage/Offset	83914.80	83914.80	84000.00	84050.00	84100.00	84150.00	84200.00	84250.00	84300.00	84350.00	84400.00	84450.00	84500.00
Elevation Topo Bathy	6.286	5.885	3.209	0.783	0.700	1.161	0.781	-0.307	-0.828	-0.119	0.699	0.005	14.942
Plan X	83956.970	83956.970											
Plan Y	338531.502	338531.502											
Trajectory / Centreline	-3.95	-1.11			-7.00						-7.00		-2.00

typical cross-section
1 : 10

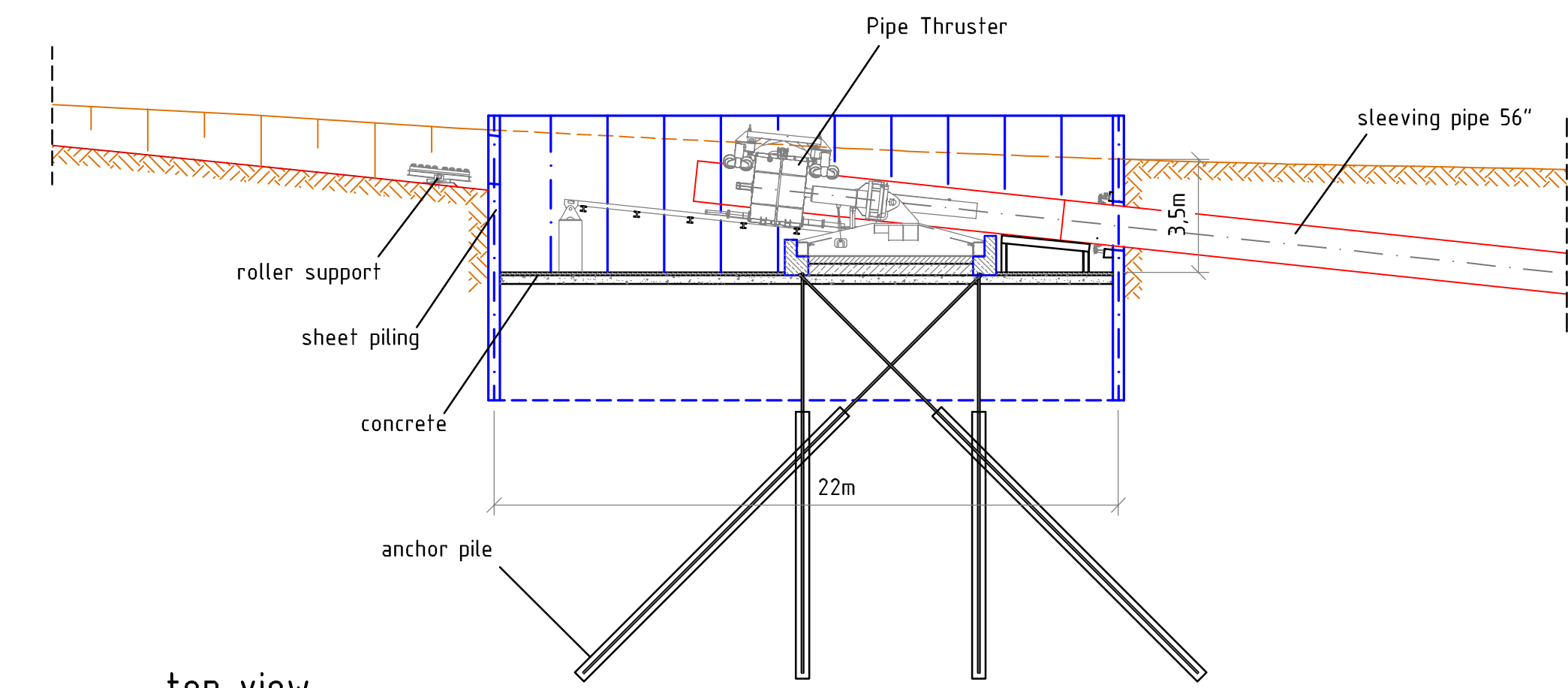


top view of gas pipeline and services
not to scale

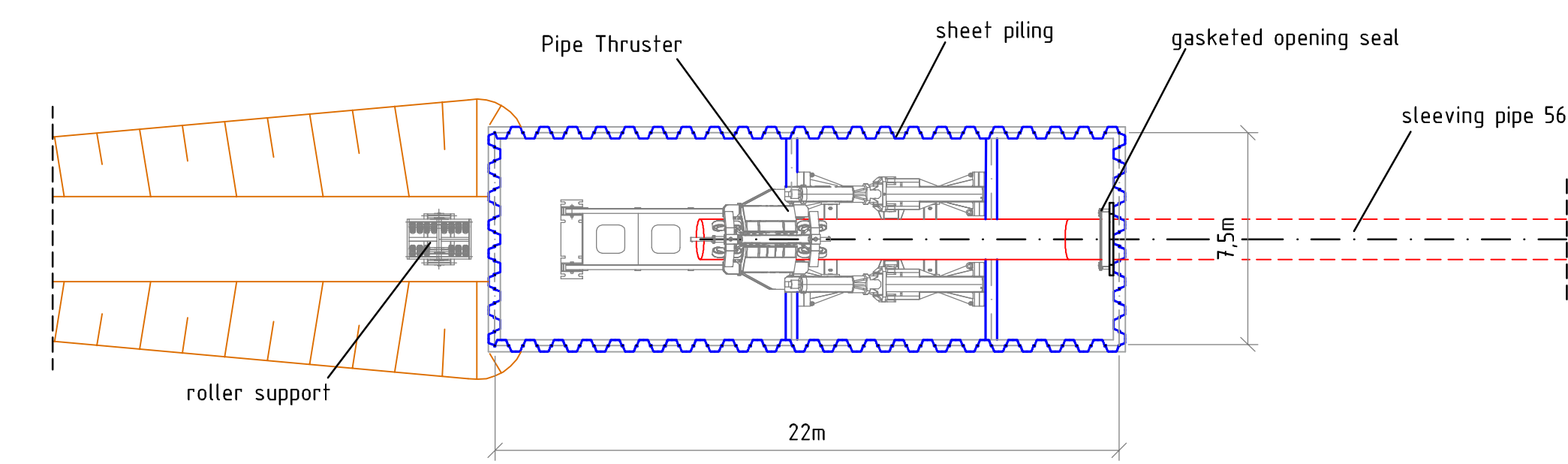


The sleeving pipe diameter is to be specified during detailed design. Typical diameter is in the range of 40 to 60-inch.

typical detail pit west bank (Glengad)
1 : 200



top view



TYPICAL MICRO-TUNNELING METHOD
LOWER BAY CROSSING
Final profile and technical details subject to detailed design.

- dimensions in meters -

3	modification of explanations for cross-section	10.12.08	Sadek	4	modification of cross-section	08.12.08	Sadek
3	sleeve pipe grade	14.09.08	Sadek	4	modification of cross-section	08.12.08	Sadek
1	swooped (pits), trajectory changed	17.07.08	Sadek	2	modification of explanations for cross-section	23.07.08	Bhuma

designer:	de la Mota & Partner GmbH Berling, Heing - Sullershausen	client:	Shell E&P Ireland Ltd
title:	Corrib Onshore Pipeline Lower Bay Crossing	code:	208 035 - 1 - 5 DG 401
scale:	1 : 1.000	date:	2008 05.06
author:	Sadek	checked:	Sadek
approved:		approved:	

All rights are reserved for this drawing. It may not be reproduced or disclosed to third parties without consent. All rights are reserved by the author.