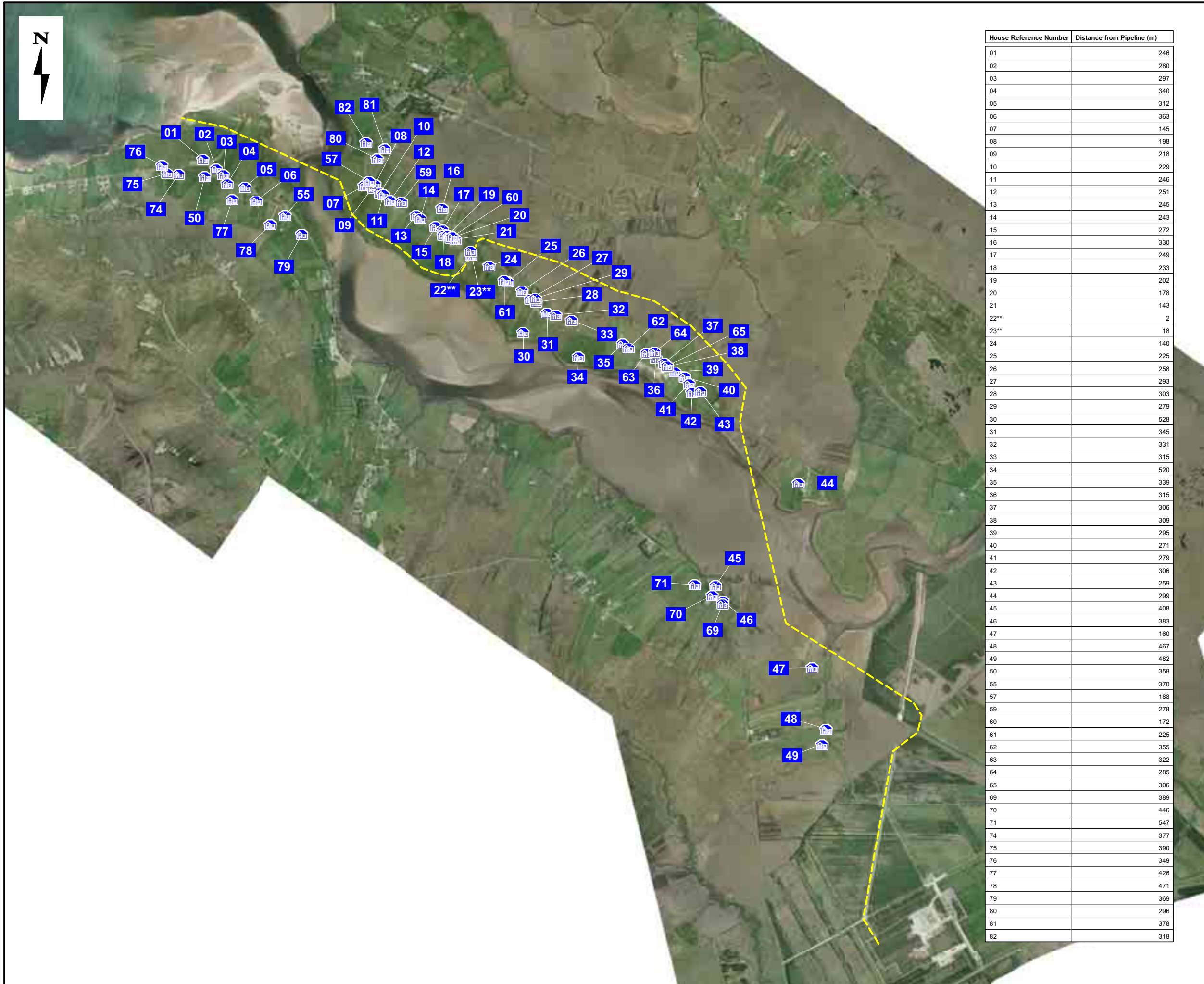




Appendix A2

Proximity of Pipeline to Local Housing



| House Reference Number | Distance from Pipeline (m) |
|------------------------|----------------------------|
| 01 | 246 |
| 02 | 280 |
| 03 | 297 |
| 04 | 340 |
| 05 | 312 |
| 06 | 363 |
| 07 | 145 |
| 08 | 198 |
| 09 | 218 |
| 10 | 229 |
| 11 | 246 |
| 12 | 251 |
| 13 | 245 |
| 14 | 243 |
| 15 | 272 |
| 16 | 330 |
| 17 | 249 |
| 18 | 233 |
| 19 | 202 |
| 20 | 178 |
| 21 | 143 |
| 22** | 2 |
| 23** | 18 |
| 24 | 140 |
| 25 | 225 |
| 26 | 258 |
| 27 | 293 |
| 28 | 303 |
| 29 | 279 |
| 30 | 528 |
| 31 | 345 |
| 32 | 331 |
| 33 | 315 |
| 34 | 520 |
| 35 | 339 |
| 36 | 315 |
| 37 | 306 |
| 38 | 309 |
| 39 | 295 |
| 40 | 271 |
| 41 | 279 |
| 42 | 306 |
| 43 | 259 |
| 44 | 299 |
| 45 | 408 |
| 46 | 383 |
| 47 | 160 |
| 48 | 467 |
| 49 | 482 |
| 50 | 358 |
| 55 | 370 |
| 57 | 188 |
| 59 | 278 |
| 60 | 172 |
| 61 | 225 |
| 62 | 355 |
| 63 | 322 |
| 64 | 285 |
| 65 | 306 |
| 69 | 389 |
| 70 | 446 |
| 71 | 547 |
| 74 | 377 |
| 75 | 390 |
| 76 | 349 |
| 77 | 426 |
| 78 | 471 |
| 79 | 369 |
| 80 | 296 |
| 81 | 378 |
| 82 | 318 |

LEGEND:

-  Proposed Route
-  House Location

Note:
 Distance measured from nearest edge of each structure
 ** House unoccupied (see EIS section 3.4.1.6)

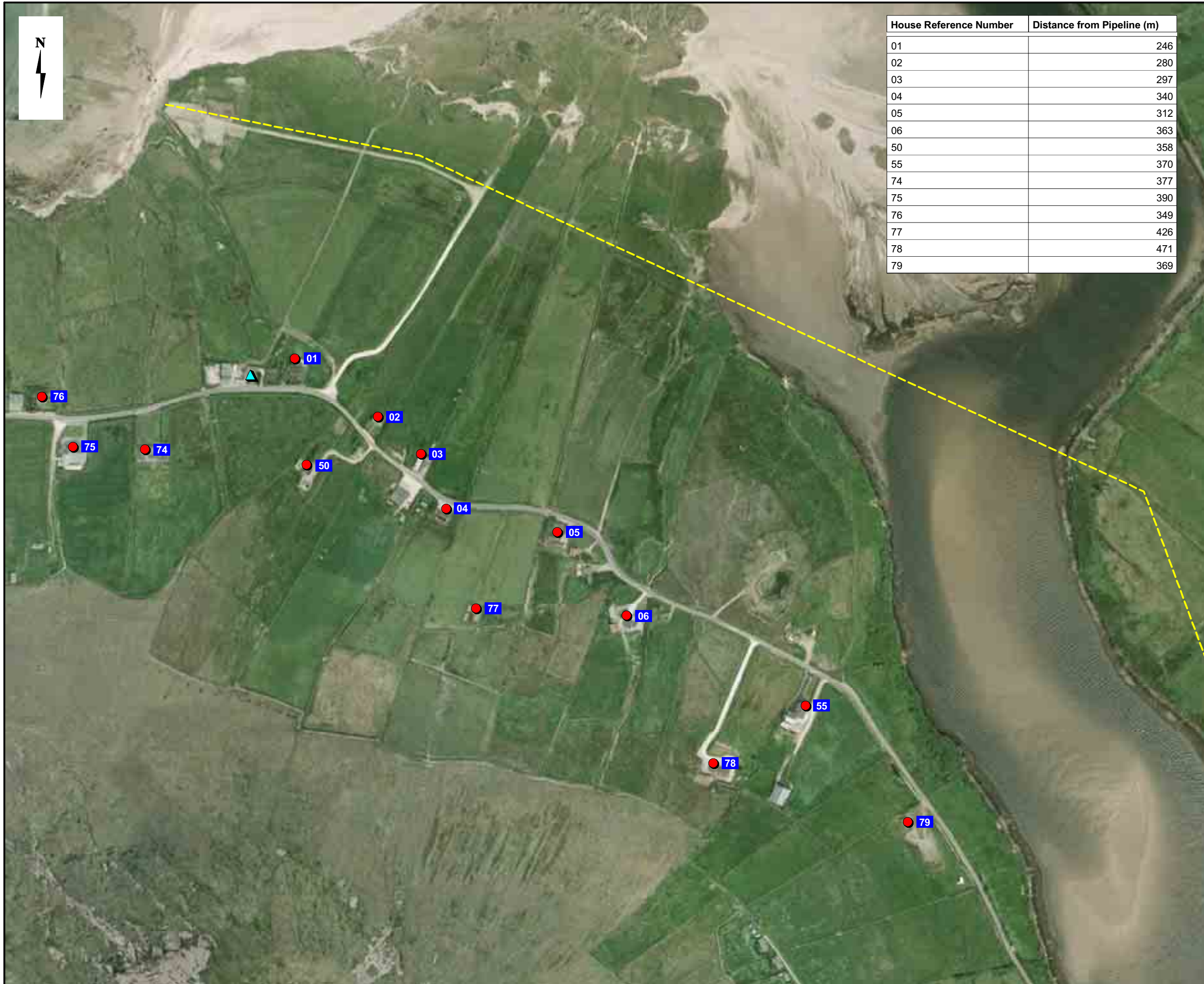


Proximity of Pipeline Route to Local Housing

File Ref: COR25MDR0470Mi2132A04
 Date: February 2009

CORRIB ONSHORE PIPELINE





| House Reference Number | Distance from Pipeline (m) |
|------------------------|----------------------------|
| 01 | 246 |
| 02 | 280 |
| 03 | 297 |
| 04 | 340 |
| 05 | 312 |
| 06 | 363 |
| 50 | 358 |
| 55 | 370 |
| 74 | 377 |
| 75 | 390 |
| 76 | 349 |
| 77 | 426 |
| 78 | 471 |
| 79 | 369 |

LEGEND:

Proposed Route

House Location

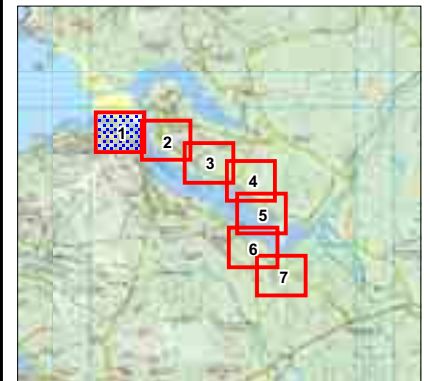
Structures within 140m of Pipeline:

Derelict

Note:

Distance measured from nearest edge of each house

Only Sheds/Stores & Derelicts located within 140 m of the Pipeline Route are highlighted.



Proximity of Pipeline Route to Local Housing (Sheet 1 of 7)

File Ref: COR25MDR0470Mi2136A04
Date: February 2009





CORRIB ONSHORE PIPELINE





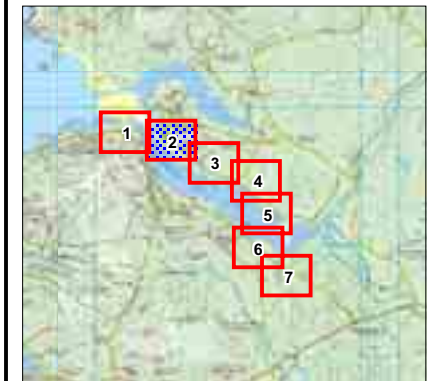
| House Reference Number | Distance from Pipeline (m) |
|------------------------|----------------------------|
| 07 | 145 |
| 08 | 198 |
| 09 | 218 |
| 10 | 229 |
| 11 | 246 |
| 12 | 251 |
| 13 | 245 |
| 14 | 243 |
| 15 | 272 |
| 16 | 330 |
| 17 | 249 |
| 18 | 233 |
| 19 | 202 |
| 20 | 178 |
| 21 | 143 |
| 22** | 2 |
| 23** | 18 |
| 24 | 140 |
| 57 | 188 |
| 59 | 278 |
| 60 | 172 |
| 80 | 296 |
| 81 | 378 |
| 82 | 318 |

LEGEND:

-  Proposed Route
-  House Location
- Structures within 140m of Pipeline:**
-  Shed/Store
-  Derelict

Note:

Distance measured from nearest edge of each house
 ** House unoccupied (see EIS section 3.4.1.6)
 Only Sheds/Stores & Derelicts located within 140 m of the Pipeline Route are highlighted.



Proximity of Pipeline Route to Local Housing
 (Sheet 2 of 7)

File Ref: COR25MDR0470Mi2137A04
 Date: February 2009

CORRIÏ ONSHORE PIPELINE




CORRIÏ
 natural gas

RPS



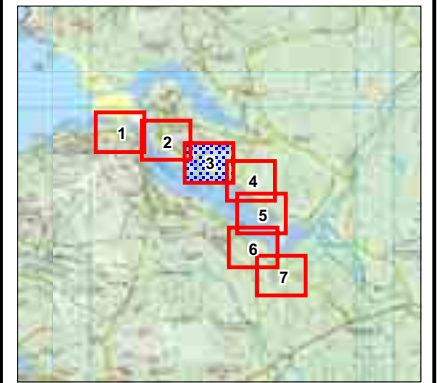
| House Reference Number | Distance from Pipeline (m) |
|------------------------|----------------------------|
| 24 | 140 |
| 25 | 225 |
| 26 | 258 |
| 27 | 293 |
| 28 | 303 |
| 29 | 279 |
| 30 | 528 |
| 31 | 345 |
| 32 | 331 |
| 33 | 315 |
| 34 | 520 |
| 35 | 339 |
| 36 | 315 |
| 37 | 306 |
| 61 | 225 |
| 62 | 355 |
| 63 | 322 |
| 64 | 285 |

LEGEND:

-  Proposed Route
-  House Location
-  Derelict

Structures within 140m of Pipeline:

Note:
 Distance measured from nearest edge of each house
 Only Sheds/Stores & Derelicts located within 140 m of the Pipeline Route are highlighted.



Proximity of Pipeline Route to Local Housing (Sheet 3 of 7)

File Ref: COR25MDR0470Mi2138A04
 Date: February 2009

CORRIB ONSHORE PIPELINE





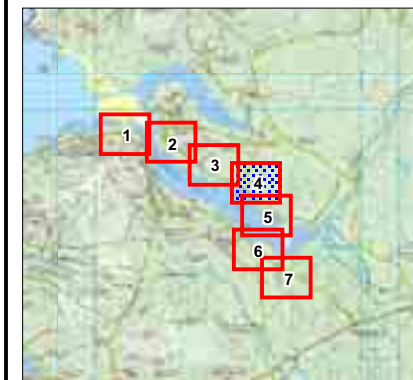
| House Reference Number | Distance from Pipeline (m) |
|------------------------|----------------------------|
| 36 | 315 |
| 37 | 306 |
| 38 | 309 |
| 39 | 295 |
| 40 | 271 |
| 41 | 279 |
| 42 | 306 |
| 43 | 259 |
| 63 | 322 |
| 64 | 285 |
| 65 | 306 |

LEGEND:

- Proposed Route
- House Location

Note:

Distance measured from nearest edge of each house
 Only Sheds/Stores & Derelicts located within 140 m of the Pipeline Route are highlighted.



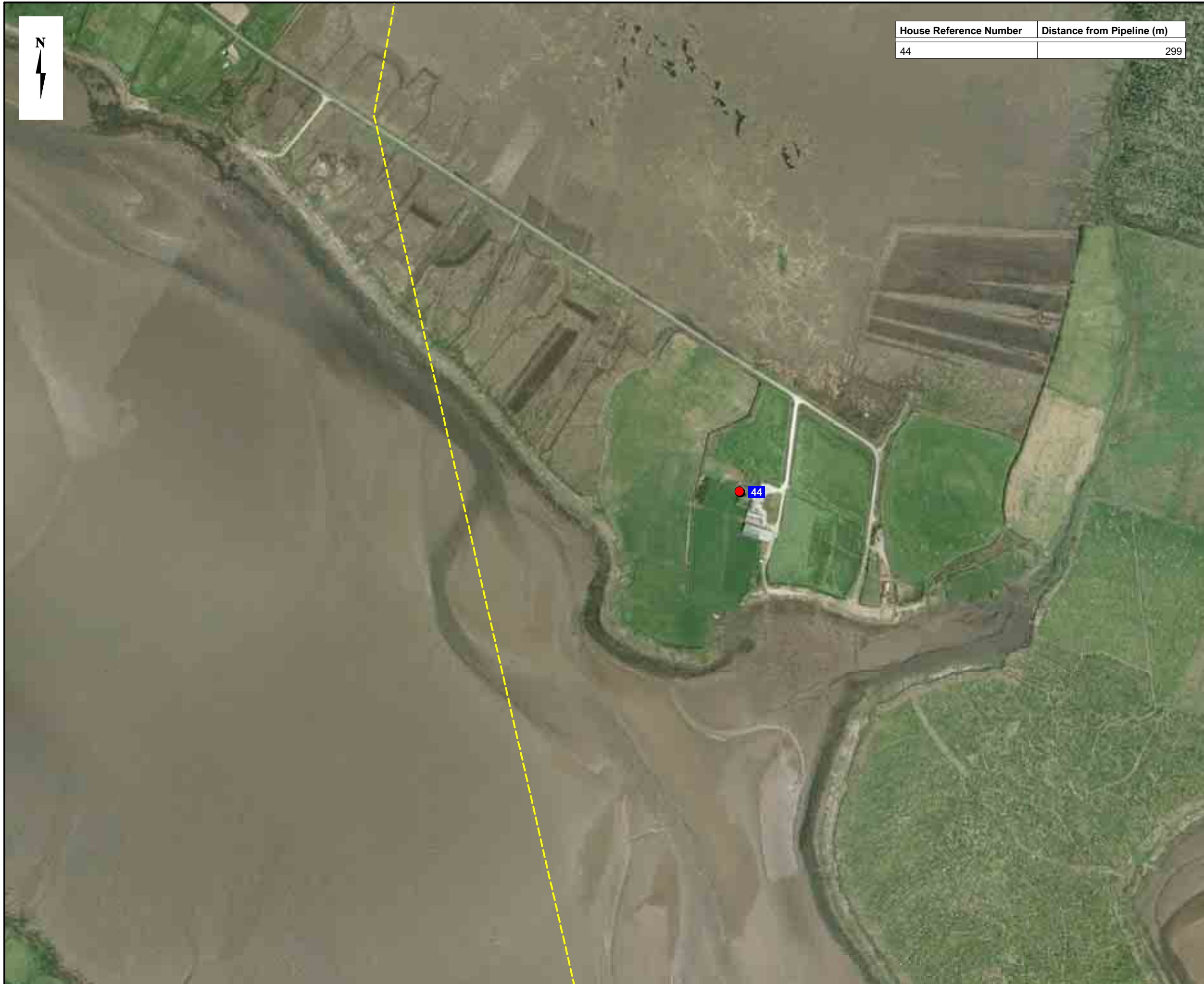
Proximity of Pipeline Route to Local Housing
 (Sheet 4 of 7)

File Ref: COR25MDR0470Mi2139A04
 Date: February 2009

CORRIB ONSHORE PIPELINE

CORRIB
 natural gas

RPS



LEGEND:

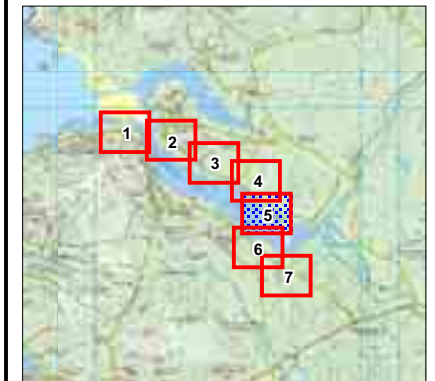
 Proposed Route

 House Location

Note:

Distance measured from nearest edge of each house

Only Sheds/Stores & Derelicts located within 140 m of the Pipeline Route are highlighted.



Proximity of Pipeline Route to Local Housing
(Sheet 5 of 7)

File Ref: COR25MDR0470Mi2140A04
Date: February 2009

CORRIB ONSHORE PIPELINE

CORRIB
natural gas

RPS



| House Reference Number | Distance from Pipeline (m) |
|------------------------|----------------------------|
| 45 | 408 |
| 46 | 383 |
| 47 | 160 |
| 69 | 389 |
| 70 | 446 |
| 71 | 547 |

LEGEND:

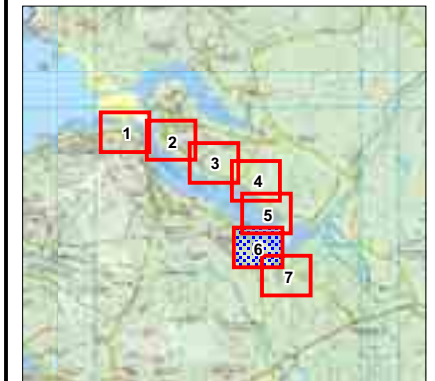
Proposed Route

House Location

Note:

Distance measured from nearest edge of each house

Only Sheds/Stores & Derelicts located within 140 m of the Pipeline Route are highlighted.



Proximity of Pipeline Route to Local Housing
(Sheet 6 of 7)

File Ref: COR25MDR0470Mi2141A04
Date: February 2009

CORRIØ ONSHORE PIPELINE

CORRIØ
natural gas

RPS



| House Reference Number | Distance from Pipeline (m) |
|------------------------|----------------------------|
| 47 | 160 |
| 48 | 467 |
| 49 | 482 |

LEGEND:

Proposed Route

House Location

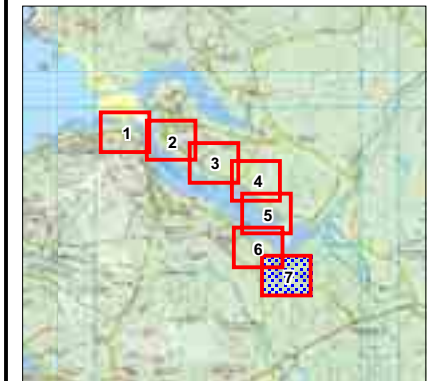
Structures within 140m of Pipeline:

Shed/Store

Note:

Distance measured from nearest edge of each house

Only Sheds/Stores & Derelicts located within 140 m of the Pipeline Route are highlighted.



Proximity of Pipeline Route to Local Housing
(Sheet 7 of 7)

File Ref: COR25MDR0470Mi2142A04
Date: February 2009

CORRIB ONSHORE PIPELINE

CORRIB
natural gas

RPS