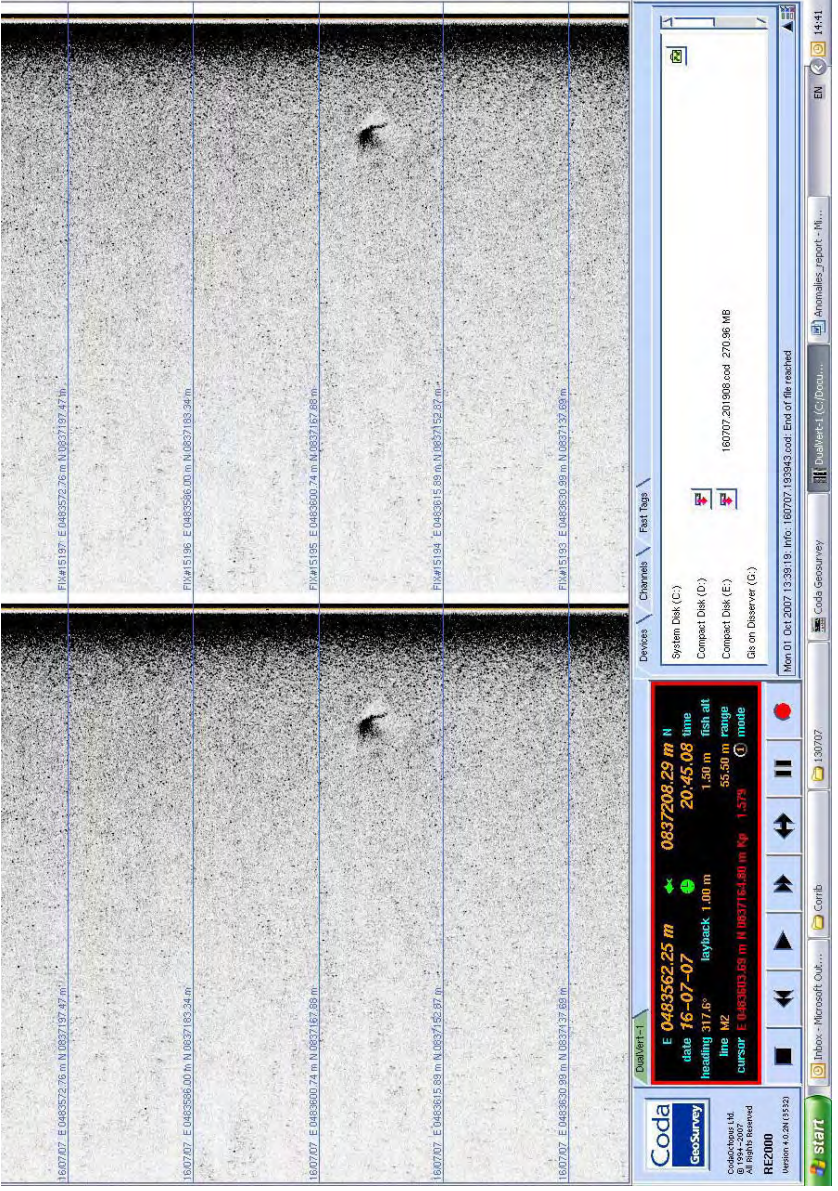
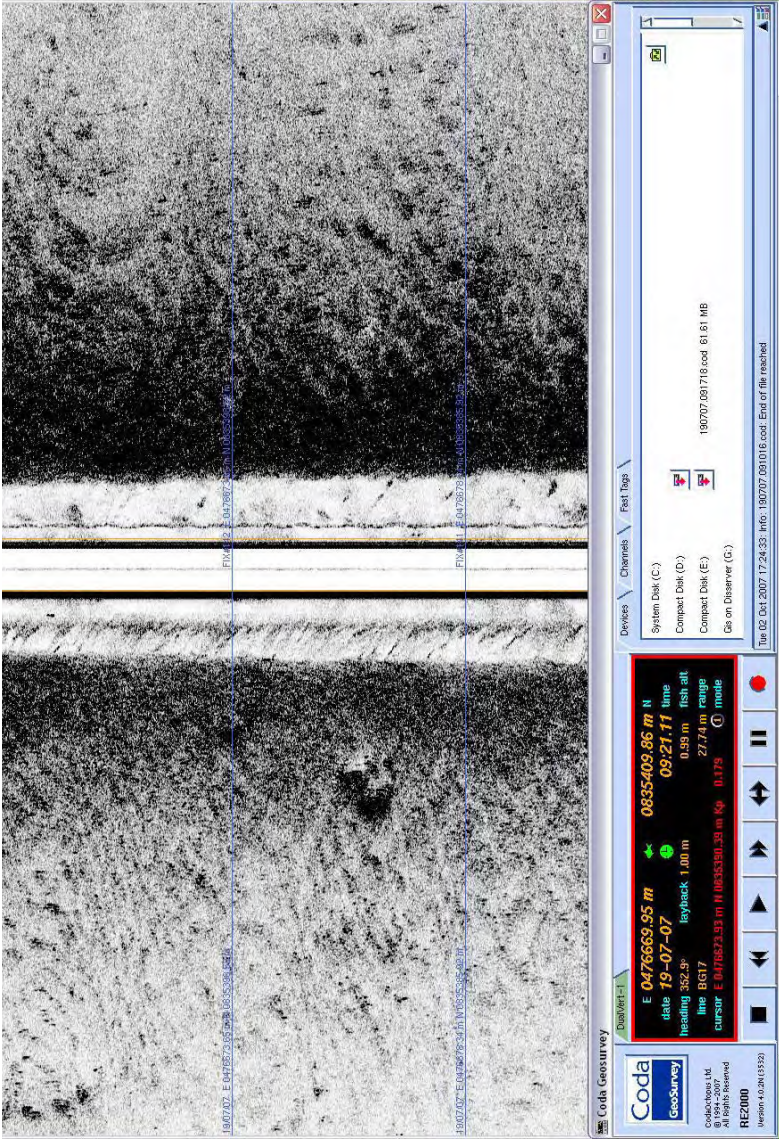
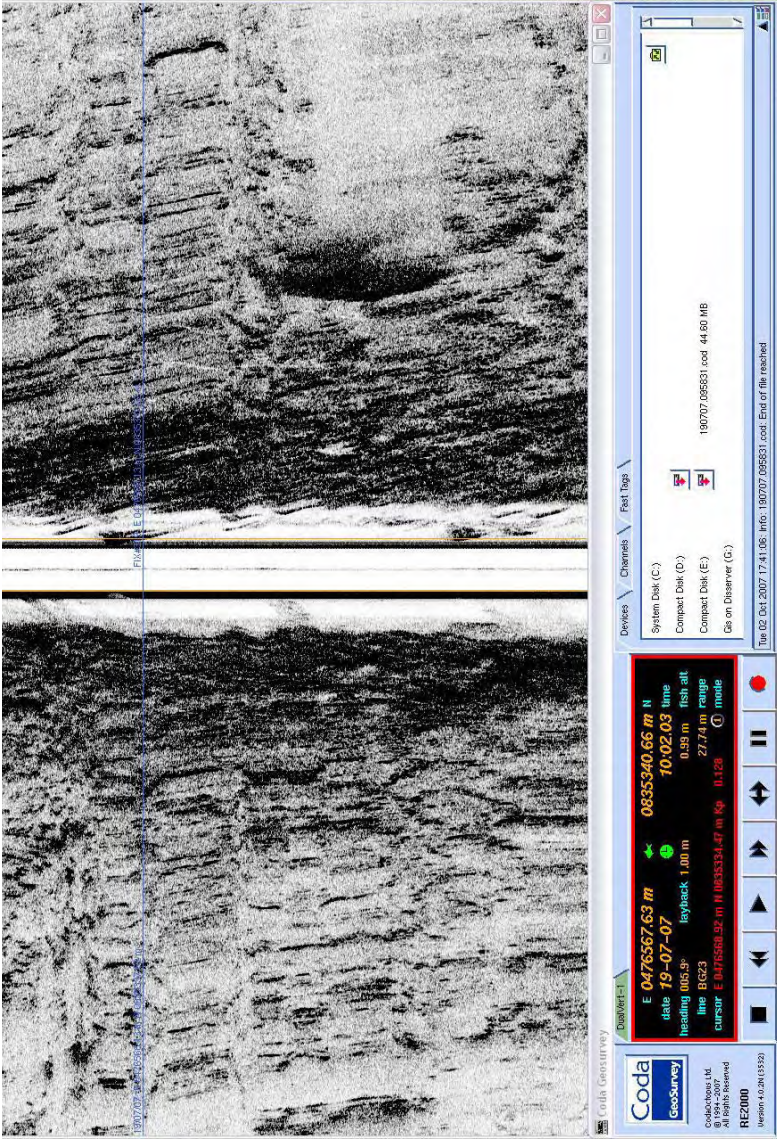
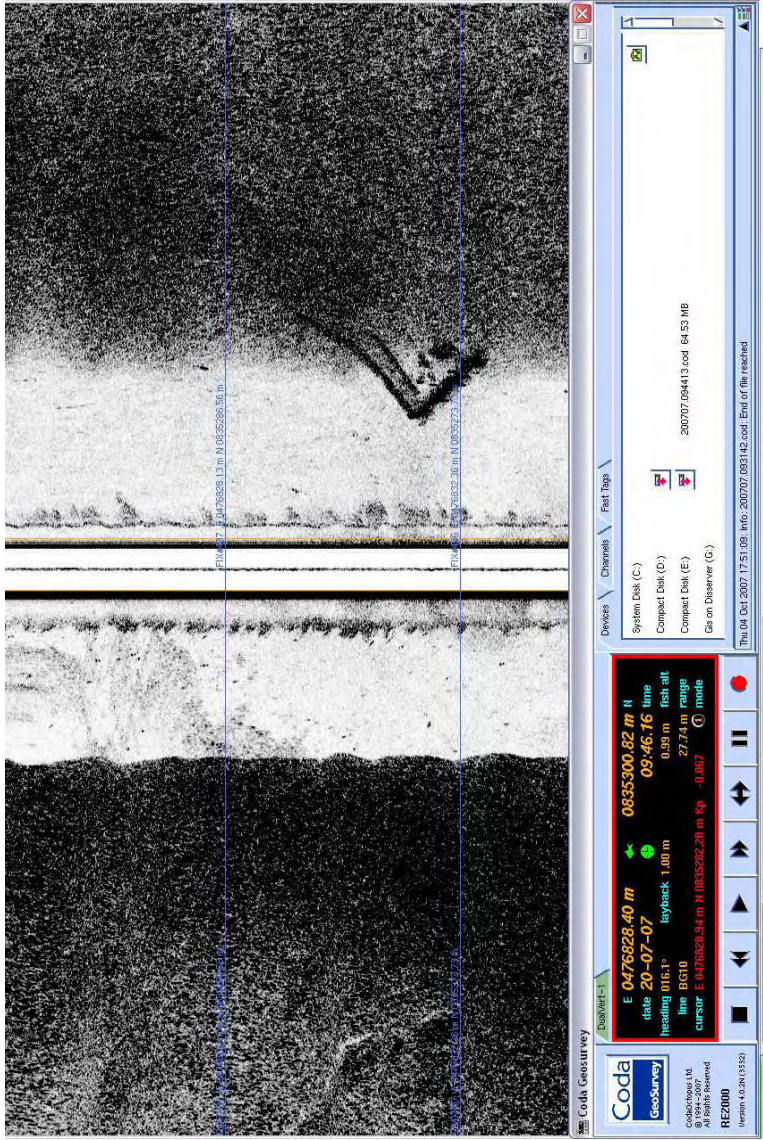
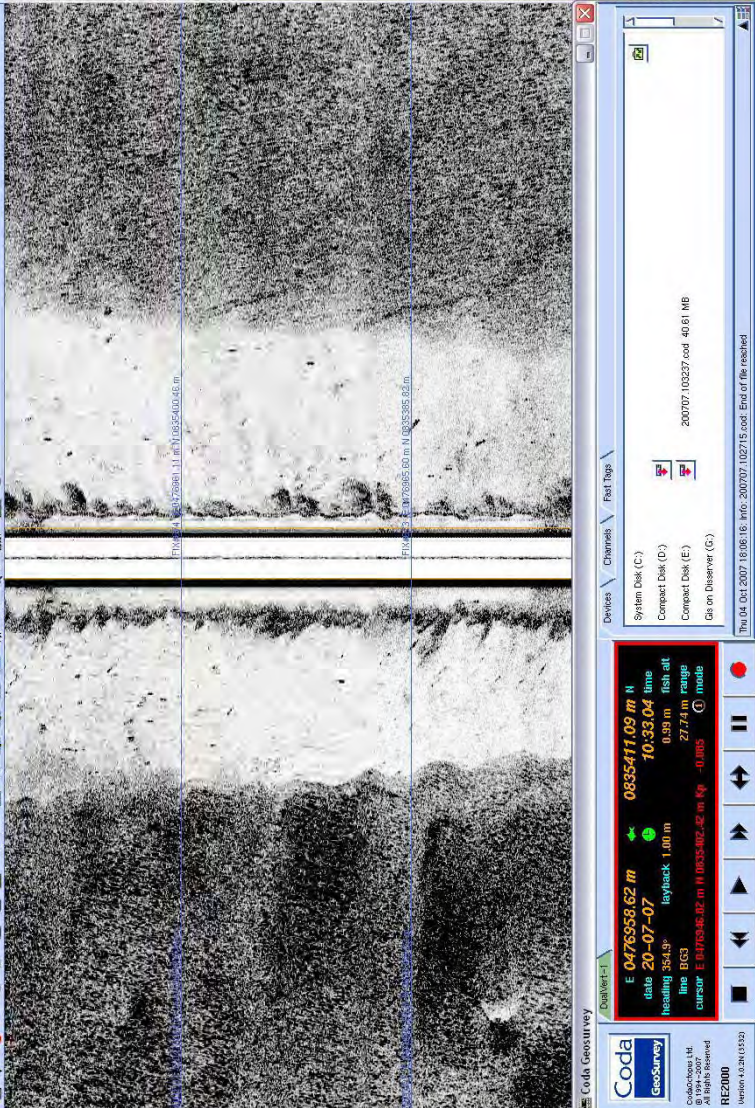


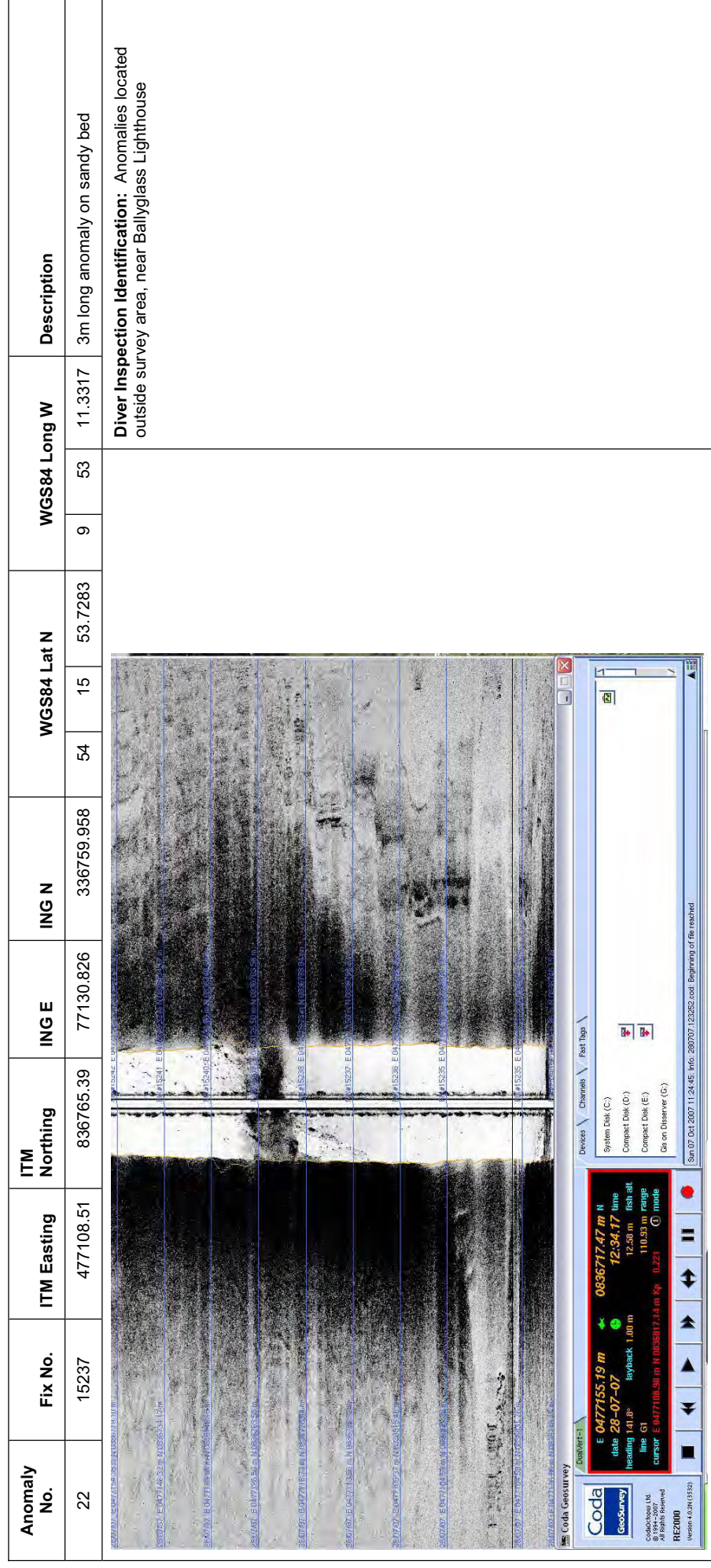
Anomaly No.	Fix No.	ITM Easting	ITM Northing	ING E	ING N	WGS84 Lat N			WGS84 Long W			Description
16	14873	483594.07	837159.93	83617.756	337154.586	54	16	11.9429	9	47	13.67148	Localized small anomaly on seabed, debris
See anomaly 17, which is the same location												
17	15194	483597.76	837154.03	83621.447	337148.685	54	16	11.7551	9	47	13.45939	Localized anomaly on sandy featureless bed.
 <p>Diver Inspection Identification: Anomalies 16 and 17 are the same object observed from different angles. The object is a large Fragment of Iron, machine part, with scour hole and snagged mono-filament netting, Plate 51.</p>												

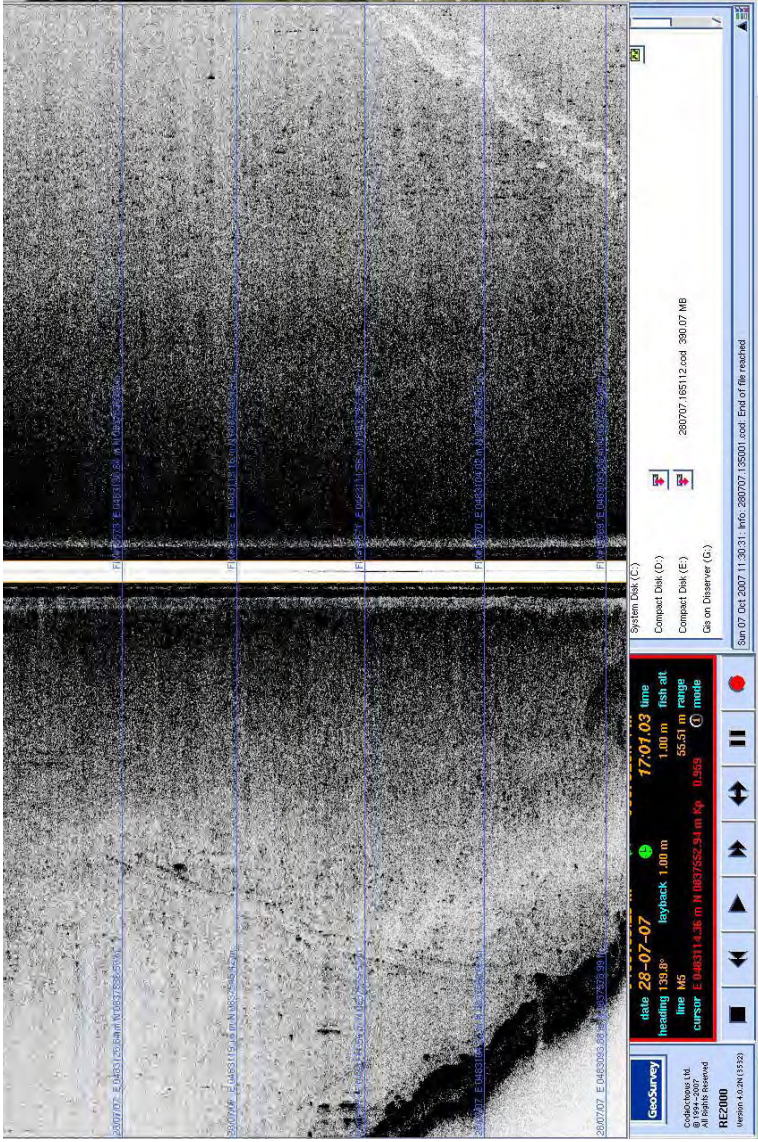
Anomaly No.	Fix No.	ITM Easting	ITM Northing	ING E	ING N	WGS84 Lat N			WGS84 Long W			Description
18	141?	476666.64	835388.59	76688.876	335382.857	54	15	8.83324	9	53	33.69643	Localized anomaly on rough silt bed. Rock?
<div></div> <p>Diver Inspection Identification: Outside Study area</p>												

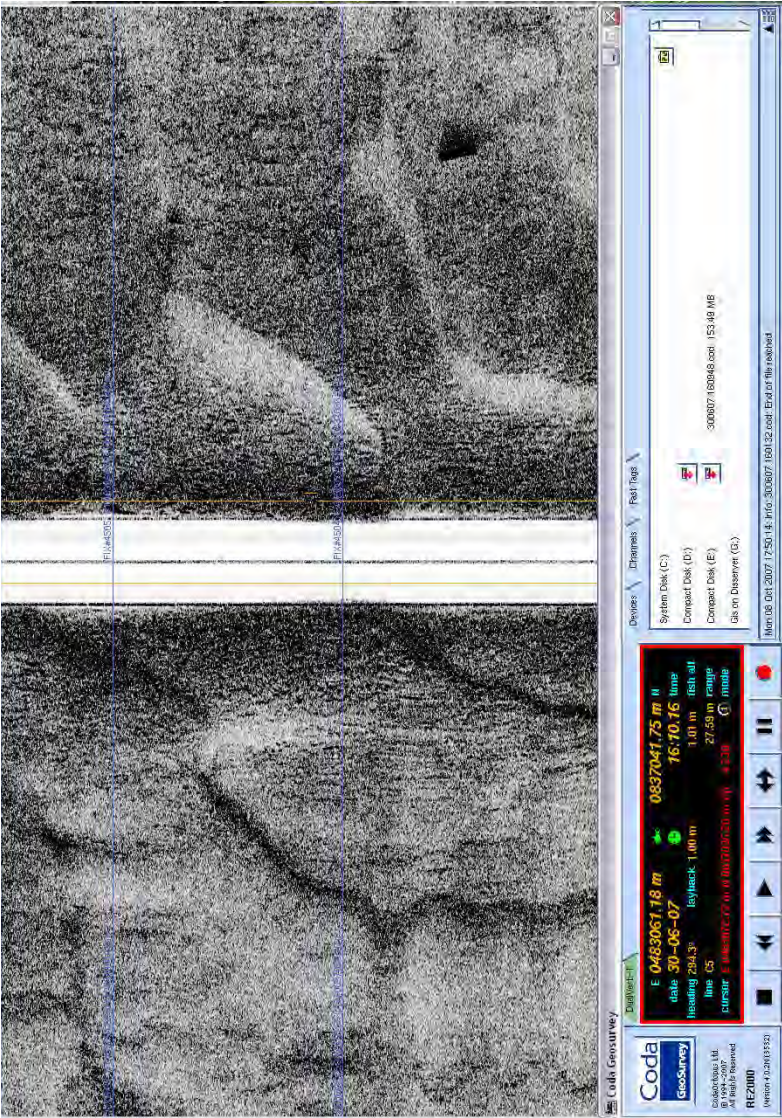
Anomaly No.	Fix No.	ITM Easting	ITM Northing	ING E	ING N	WGS84 Lat N			WGS84 Long W			Description
19	316?	476581.67	835333.19	76603.888	335327.445	54	15	6.96844	9	53	38.30577	linear straight-sided anomaly, c. 2m long x 70cm wide, possible plank like feature but equally possible turf-cutting anomaly
												Diver Inspection Identification: Outside Study area

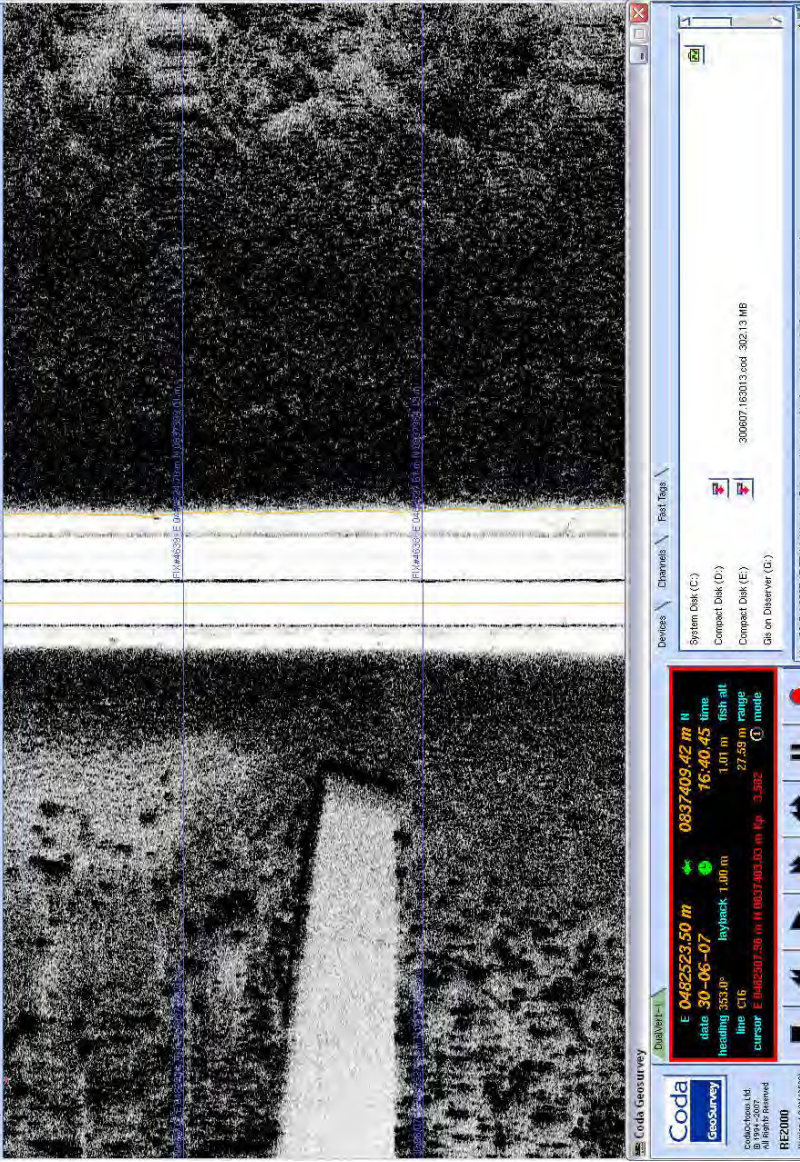
Anomaly No.	Fix No.	ITM Easting	ITM Northing	ING E	ING N	WGS84 Lat N			WGS84 Long W			Description
20	406?	476839.59	835277.99	76861.864	335272.233	54	15	5.40736	9	53	23.98381	Striking anomaly on clay bed. Straight side 5.64m long with three curving ribs extending on SW side, the longest measuring 8.46m long. Definite high potential
 <p>Diver Inspection Identification: Anomalies located outside survey area, near Ballyglass Lighthouse.</p>												

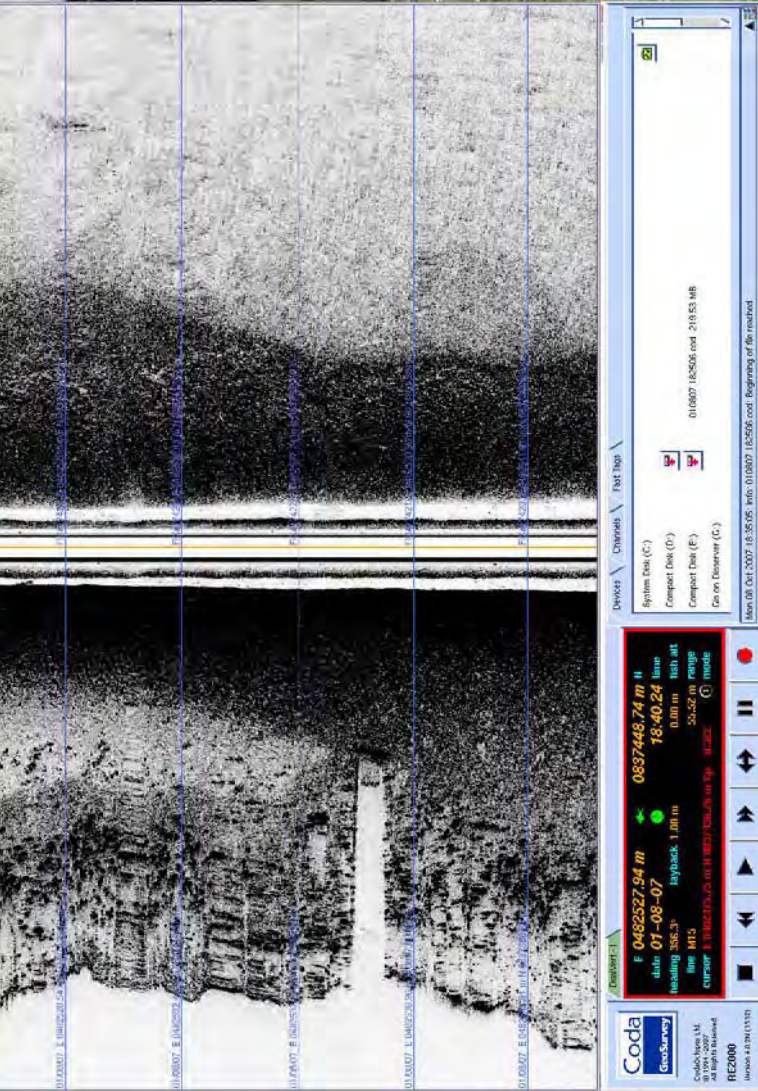
Anomaly No.	Fix No.	ITM Easting	ITM Northing	ING E	ING N	WGS84 Lat N			WGS84 Long W			Description
21	673	476946.42	835371.81	76968.715	335366.074	54	15	8.53306	9	53	18.22416	Localized anomaly on clay/sand bed. Debris?
 <p>Diver Inspection Identification: Anomalies located outside survey area, near Ballyglass Lighthouse.</p>												

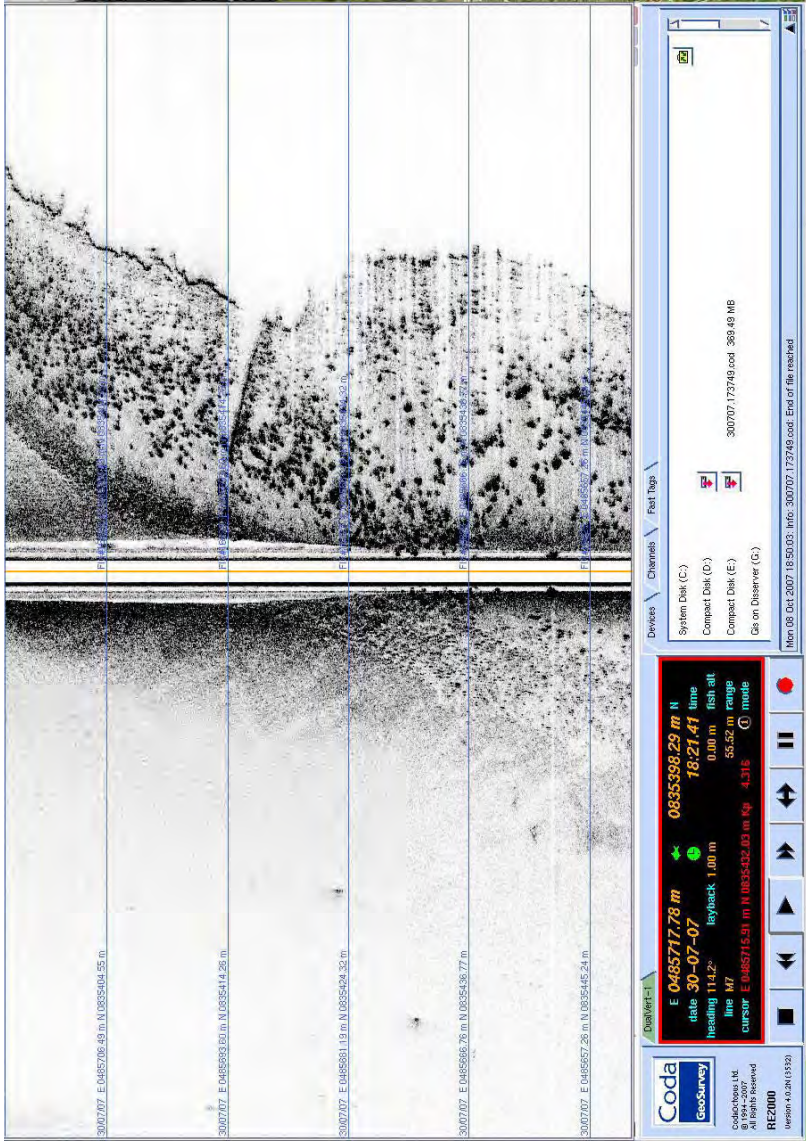


Anomaly No.	Fix No.	ITM Easting	ITM Northing	ING E	ING N	WGS84 Lat N			WGS84 Long W			Description
23	5569	483135.45	837590.55	83159.034	337585.299	54	16	25.4894	9	47	39.6103	Parallel linear track, probable dragline. Heading SE/NW from shore, c.40m long+, 1m wide.
	to 5573	483150.04	837550.34	83173.628	337545.081	54	16	24.2013	9	47	38.74779	
<div></div> <p>Diver Inspection Identification: Anomalies located outside survey area, near Ballyglass Lighthouse.</p>												

Anomaly No.	Fix No.	ITM Easting	ITM Northing	ING E	ING N	WGS84 Lat N			WGS84 Long W			Description
25	4504	483087.75	837049.47	83111.329	337044.102	54	16	7.95594	9	47	41.48505	c. 1m long narrow anomaly on sand-wave bed. Debris.
 <p>Diver Inspection Identification: Dog Hutch within large scour hole, Plate 52.</p>												

Anomaly No.	Fix No.	ITM Easting	ITM Northing	ING E	ING N	WGS84 Lat N			WGS84 Long W			Description
26	4638	482537.61	0837884.13	82561.065	337878.943	54	16	34.48853	9	48	13.05203	Flat sharply defined anomaly with trapezoidal echo, centreline is 7m long.
 <p>Diver Inspection Identification: No anomaly encountered during the diver-truthing of SS26.</p>												

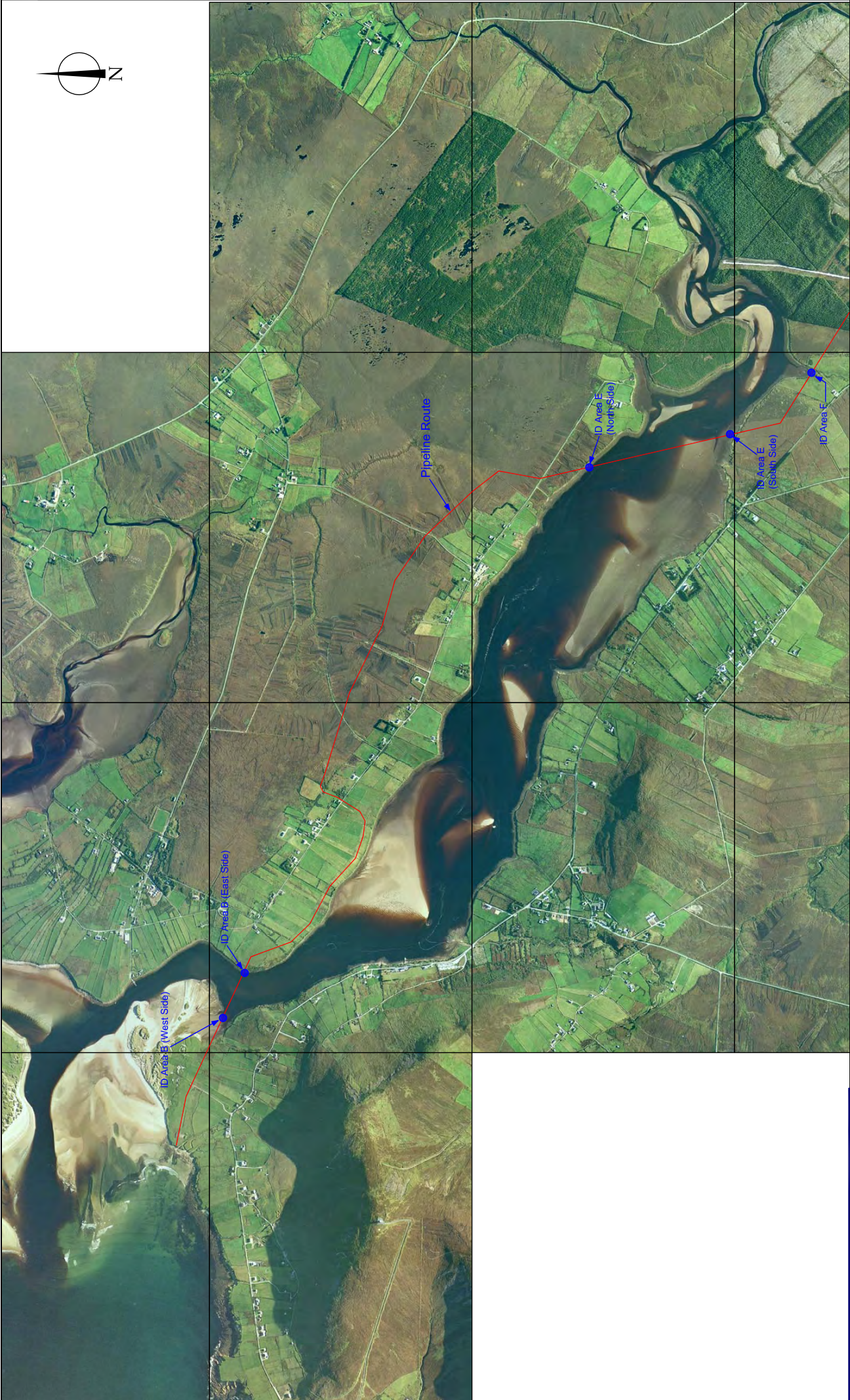
Anomaly No.	Fix No.	ITM Easting	ITM Northing	ING E	ING N	WGS84 Lat N			WGS84 Long W			Description
28	17421	482515.07	837386.17	82538.525	337380.875	54	16	18.3699	9	48	13.59398	Trapezoidal shaped anomaly with echo on silt/peat interface; manmade.
												Diver Inspection Identification: Pier Structure.

Anomaly No.	Fix No.	ITM Easting	ITM Northing	ING E	ING N	WGS84 Lat N			WGS84 Long W			Description
						54	15	16.8375	9	45	16.0059	
29	6__28	485680.46	835403.24	85704.605	335397.516							Diver Inspection Identification: Modern Drainage Pipe.

FIGURES AND PLATES



THE ARCHAEOLOGICAL DIVING COMPANY LTD. Tel. 056 4440236 email: info@adco-ir.com	Notes Expansive of Suwaddacon Bay surveyed by ADco Ltd.		Client RPS Group Ltd.		Title Figure 1- OS 1:50,000 Discovery Series Mapping showing location of Suwaddacon Bay, Co. Mayo.	
	Job/Exc No. 07D038.07R/69 07D040.07R/70		CAD reference CorribSurvey		Project Corrib Onshore Gas Pipeline Project	
	Date 21.11.07		Compiled by R.Bangerter		Drawing No. Figure 1	



Notes
Figure adapted from Project Drawing supplied by RPS Group.

Job/Exc No. 07R004 07R068, 07R070	Compiled by R.Bangertner	CAD reference CorribSurvey	Client RPS Group Ltd.
Date 15.01.08	Scale N.T.S.	Drawing No. Figure 2	Project Corrib On-shore Gas Pipeline Project

Title
Figure 2- Extract from Project Drawing showing route of proposed pipeline with Assessment Areas IDB, IDE, & and IDF marked.



**THE ARCHAEOLOGICAL
DIVING COMPANY LTD.**
Tel. 056 4440236 email: info@adco-ir.com

Notes

Job/Exc No.
07D038.07R169
07D040.07R170

Compiled by
R.Bangerter

CAD reference
CorribSurvey

Client
RPS Group Ltd.

Project
Corrib Onshore Gas Pipeline Project

Scale
N.T.S.

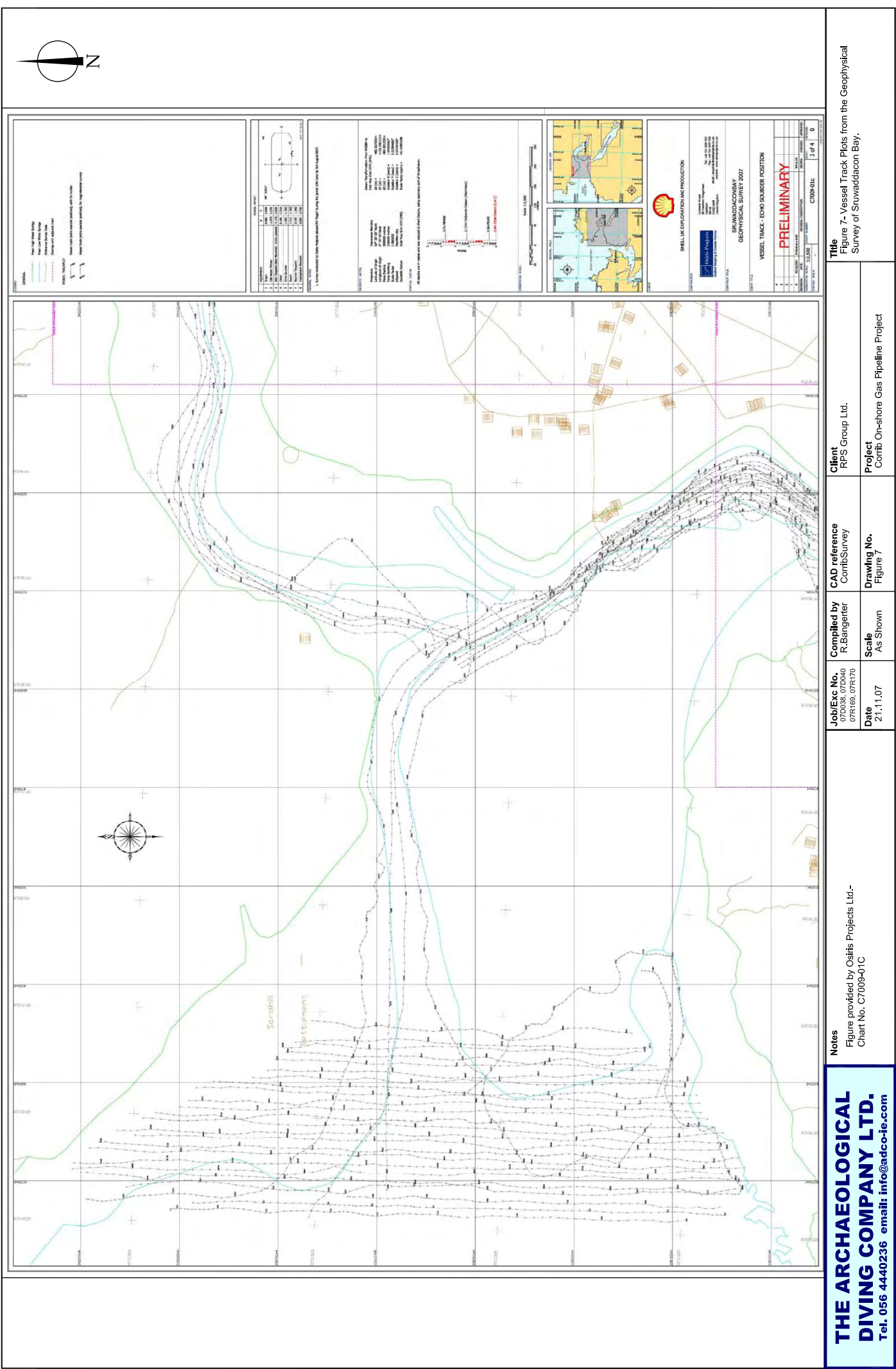
Drawing No.
Figure 3

Title
Figure 3- Extract from OS First Edition
(1839) Mapping, Mayo Sheets 4 and 11
showing Sruwaddacon Bay.



THE ARCHAEOLOGICAL DIVING COMPANY LTD. Tel. 056 4440236 email: info@adco-ie.com	Notes	Job/Exc No. 07D038.07R169 07D040.07R170		Compiled by R.Bangerter	CAD reference CorribSurvey	Client RPS Group Ltd.	Title Figure 4- Extract from OS 6" Mapping (RMP Sheets: Mayo 4 & 11) showing listed RMP sites located within the vicinity of Sruwaddacon Bay.
		Date 21.11.07	Scale N.T.S.	Drawing No. Figure 4	Project Corrib Onshore Gas Pipeline Project		

**THE ARCHAEOLOGICAL
DIVING COMPANY LTD.**
Tel. 056 4440236 email: info@adco-ir.com



THE ARCHAEOLOGICAL DIVING COMPANY LTD.
Tel. 056 4440236 email: info@adco-ae.com

Notes
Figure provided by Osiis Projects Ltd.-
Chart No. C7009-01C

Job/Exc No.
07D034, 07D040
07R166, 07R170

Date
21.11.07

Compiled by
R.Bangert

Scale
As Shown

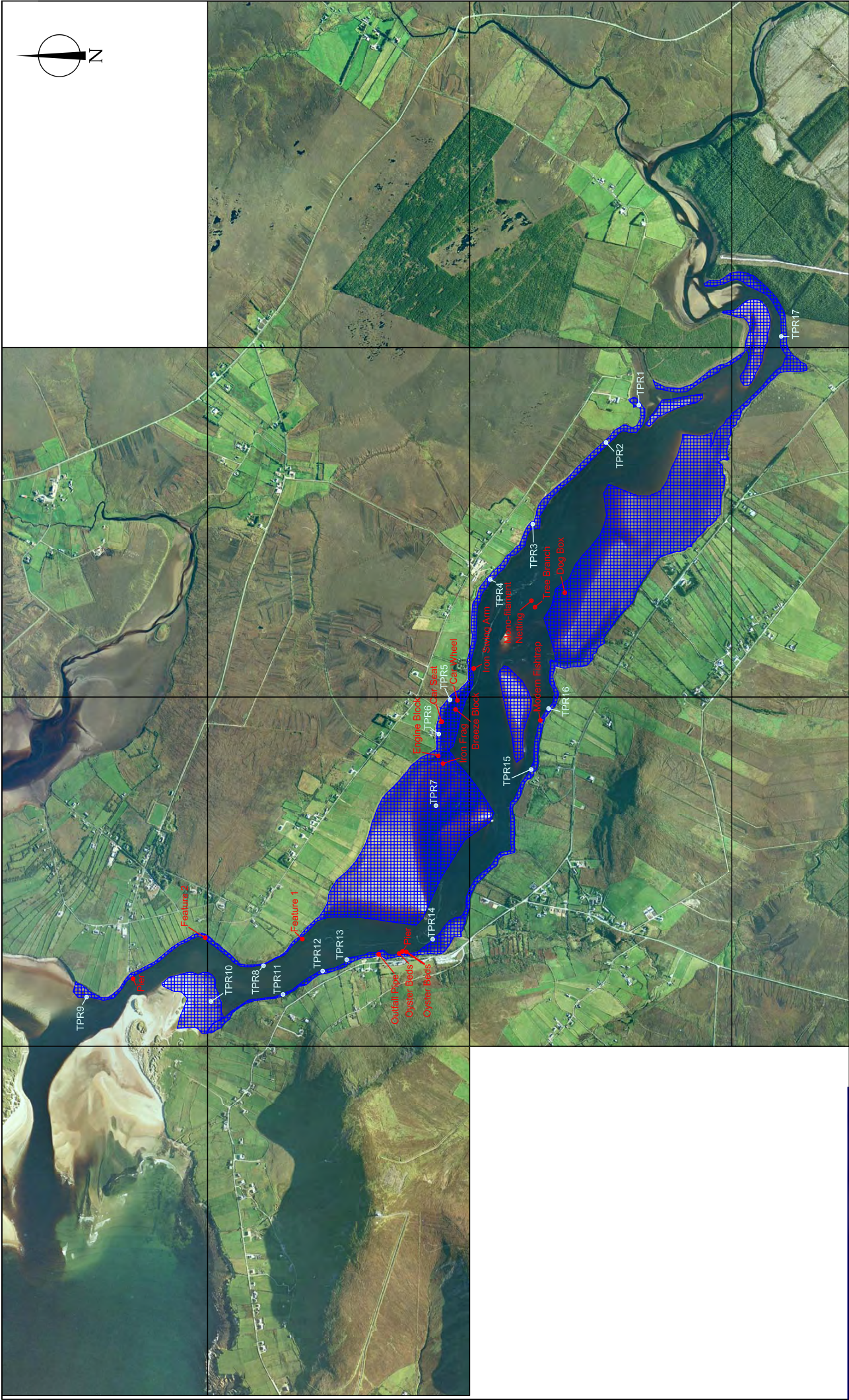
CAD reference
ContribSurvey

Drawing No.
Figure 7

Client
RPS Group Ltd.

Project
Contrib On-shore Gas Pipeline Project

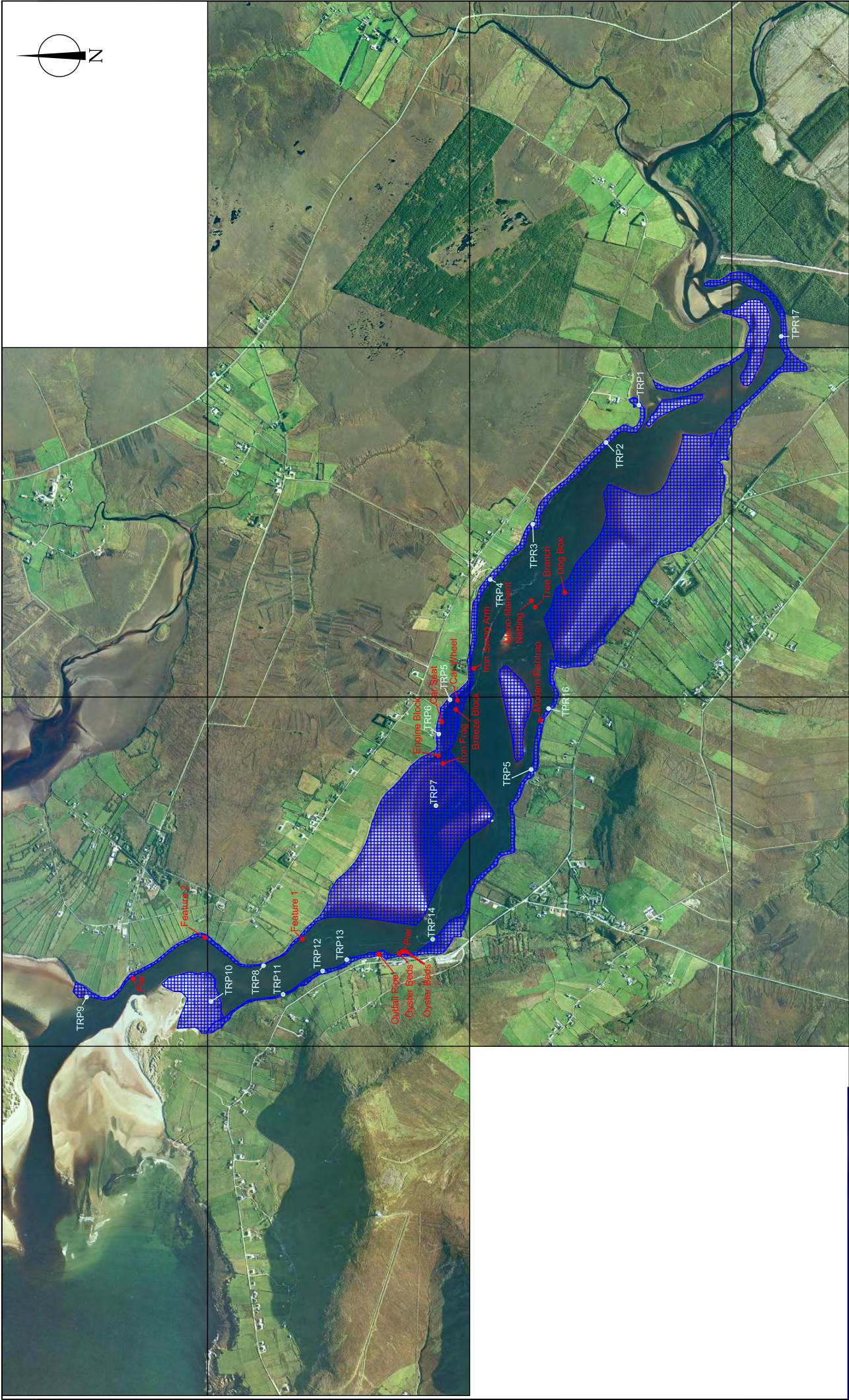
Title
Figure 7- Vessel Track Plots from the Geophysical Survey of Suwaddaon Bay.



**THE ARCHAEOLOGICAL
DIVING COMPANY LTD.**
Tel. 056 4440236 email: info@adco-4e.com

Notes
Extent of ADCO Fieldwalking along Suwaddacon Bay (undertaken between the Low Water and High Water Mark).
● Topographic Reference Point (TPR)
● Feature or Observation

Job/Exc No. 07D036, 07D040 07R168, 07R170	Compiled by R. Bangarter	CAD reference CorribSurvey	Client RPS Group Ltd.	Title Figure 8- Extract from Project Drawing showing extent of the ADCO Inter-tidal Survey within Suwaddacon Bay, location of Topographic Reference Points, and location of Field-walking Observations.
Date 21.11.07	Scale 1:20,000	Drawing No. Figure 8	Project Corrib On-shore Gas Pipeline Project	



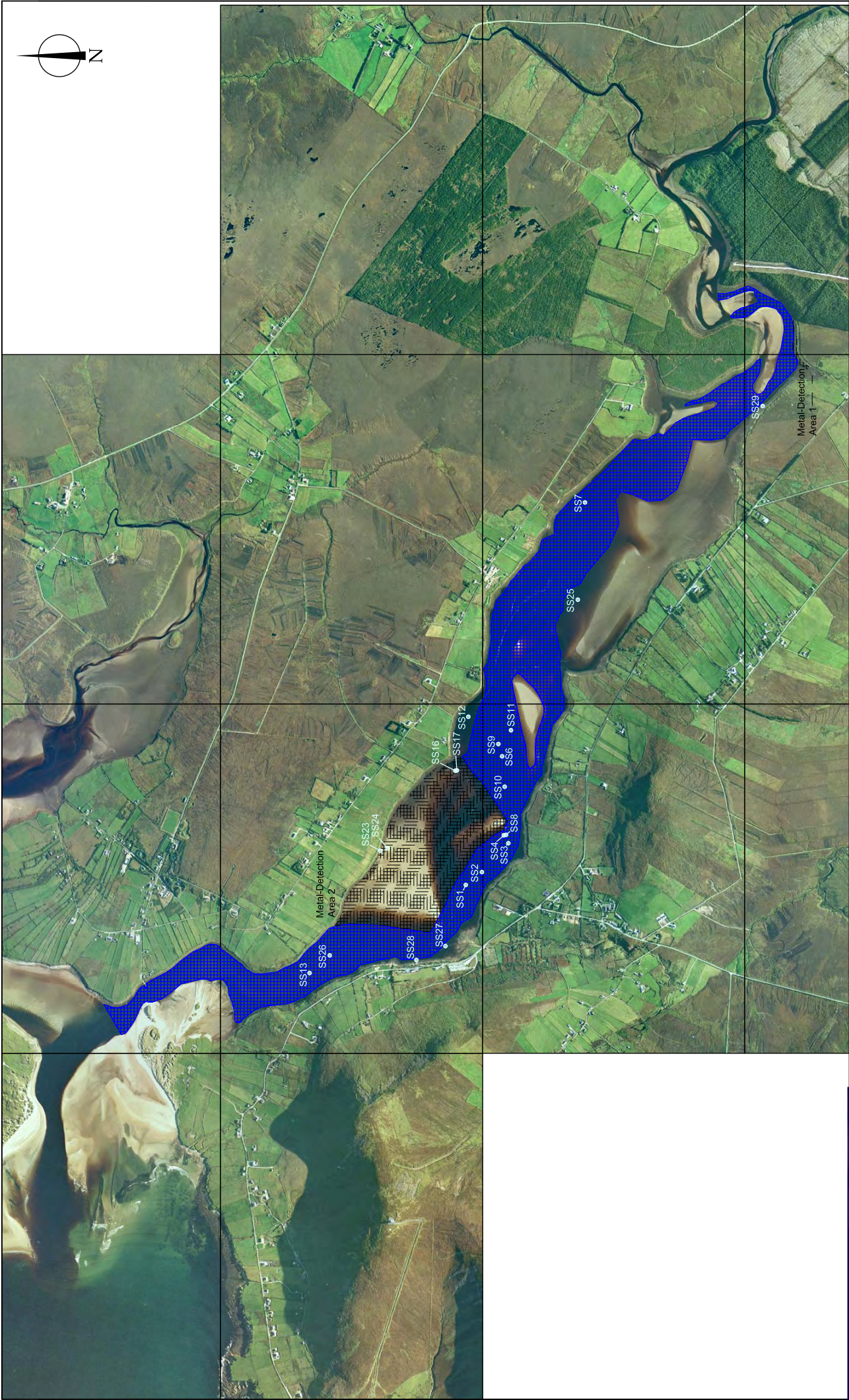
**THE ARCHAEOLOGICAL
DIVING COMPANY LTD.**
Tel. 056 4440236 email: info@adco-4e.com

Notes
Extent of ADCO Fieldwalking along Suwaddacon Bay (undertaken between the Low Water and High Water Mark).
Topographic Reference Point (TRP)
Feature or Observation

Job/Exc No.
07D036, 07D040
07R168, 07R170
Date
21.11.07

Compiled by
R. Bangarter
CAD reference
CoribSurvey
Client
RPS Group Ltd.
Project
Corrib On-shore Gas Pipeline Project

Title
Figure 10- Extract from Project Drawing showing extent of the ADCO Inter-tidal Survey within Suwaddacon Bay, location of Topographic Reference Points, and location of Field-walking Observations.



**THE ARCHAEOLOGICAL
DIVING COMPANY LTD.**
Tel. 056 4440236 email: info@adco-ile.com

Notes

- Side Scan Sonar Anomaly
- Extent of Underwater Survey within Suwaddaon Bay
- Extent of Metal-Detection Survey within Suwaddaon Bay

Job/Exc No.
07D038, 07R169
07D040, 07R170

Date
26.09.07

Compiled by
R. Bangarter

CAD reference
CorribSurvey

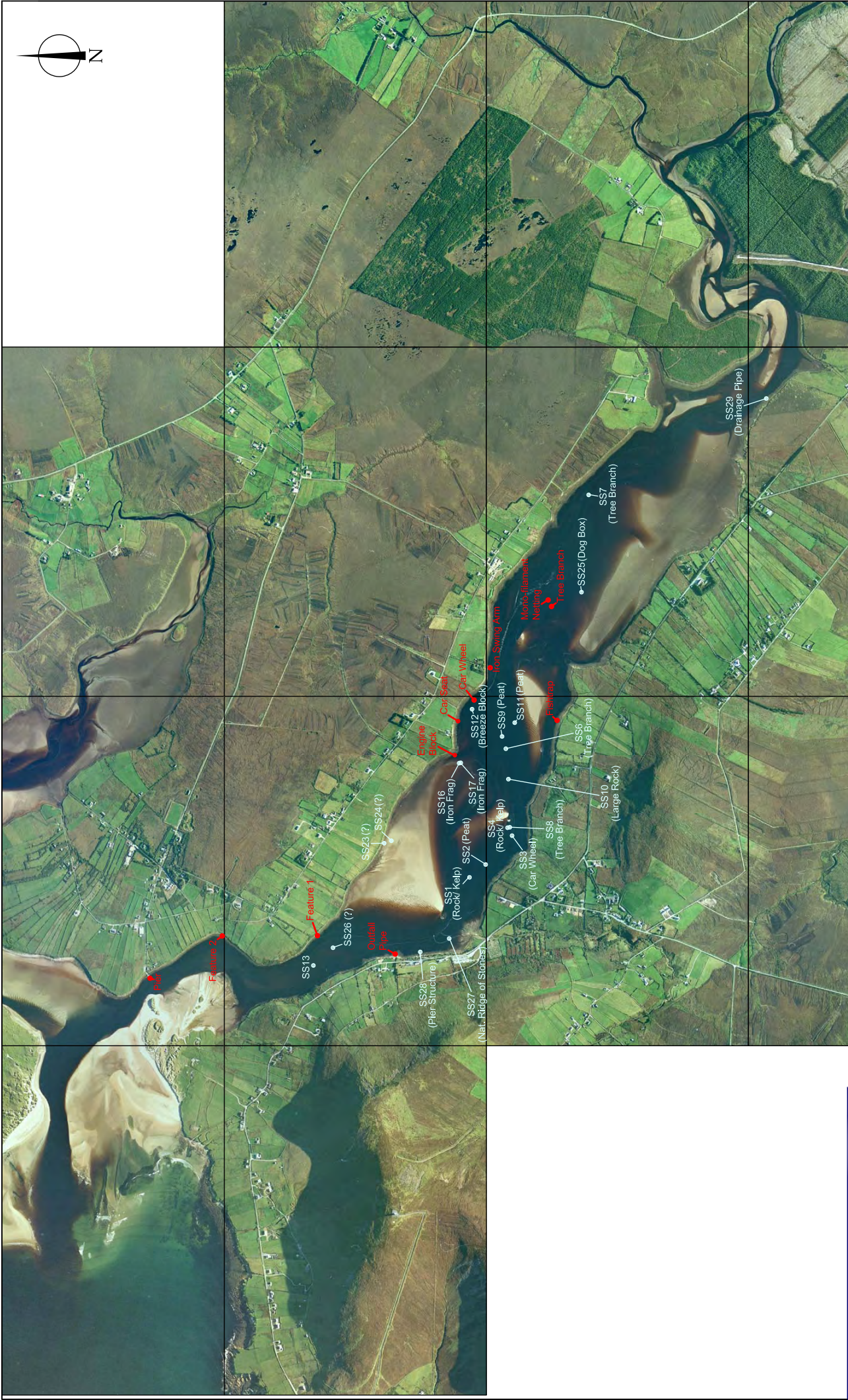
Client
RPS Group Ltd.

Project
Corrib On-shore Gas Pipeline Project

Scale
1:20,000

Drawing No.
Figure 11

Title
Figure 11- Extract of Project Drawing showing location of Geophysical Anomalies identified for inspection & extent of Underwater/ Metal Detection Survey within Suwaddaon Bay.



Notes

- Side Scan Sonar Anomaly
- Feature or Observation

**THE ARCHAEOLOGICAL
DIVING COMPANY LTD.**
Tel. 056 4440236 email: info@adco-ile.com

Title
Figure 12- Extract of Project Drawing showing
location of identified Side-scan Sonar
Anomalies and Assessment Observations.

Client
RPS Group Ltd.

Project
Corrib On-shore Gas Pipeline Project

CAD reference
CorribSurvey

Drawing No.
Figure 12

Compiled by
R.Bangenter

Scale
1:20,000

Job/Exc No.
07D038, 07R108
07D040, 07R170

Date
26.09.07



Plate 1: Working shot of metal-detection survey at Area 1 (See Figure 9 for location).



Plate 1: North-facing view of raised peat deposit along upper foreshore at TRP1 (1m scale).



Plate 2: West-facing view of inter-tidal zone and upper foreshore at TRP1.



Plate 3: North-facing view of upper foreshore at TRP 2 (1m scale).



Plate 4: West-facing view of upper and inter-tidal zone at TRP 2.



Plate 5: South-facing view of inter-tidal zone, running down to the LWM at TRP2.



Plate 6: North-facing view of upper foreshore area at TRP 3 (1m scale).



Plate 7: West-facing view of inter-tidal zone at TRP 3.



Plate 8: Southeast-facing view of inter-tidal zone at TRP 3, LWM in middle distance.



Plate 9: North-facing view of bedrock outcrop forming the upper foreshore at TRP 4 (1m scale).



Plate 10: West-facing view of inter-tidal zone at TRP 4.



Plate 11: South-facing view of inter-tidal zone, running down to the LWM, at TRP 4.



Plate 12: North-facing view of upper foreshore at TRP 5; note erosion of bank structure (1m scale).



Plate 13: West-facing view of inter-tidal zone at TRP 5.



Plate 14: South-facing view of Inter-tidal zone at TRP 5.



Plate 15: North-facing view of upper foreshore at TRP 6 (1m scale).



Plate 16: West-facing view of inter-tidal zone at TRP 6.



Plate 17: Southeast-facing view of inter-tidal zone at TRP6.



Plate 18: North-facing view across inter-tidal sandbank at TRP 7.



Plate 19: West-facing view across inter-tidal sandbank at TRP 7.



Plate 20: South-facing view across inter-tidal sandbank at TRP 7.



Plate 21: North-facing view of bedrock outcropping located along the upper foreshore at TRP 8 (1m scale).



Plate 22: West-facing view of inter-tidal zone at TRP 8.



Plate 23: South-facing view of inter-tidal zone at TRP 8.



Plate 24: Southeast-facing view of inter-tidal zone at TRP 9 (1m scale).



Plate 25: Northwest-facing view of inter-tidal zone located at the mouth of the Gweendany River Estuary, TRP 9 (1m scale).



Plate 26: Southeast-facing view of inter-tidal-zone at TRP 10.



Plate 27: Detail-shot of composition of the sandbank along the LWM at TRP 10.



Plate 28: South-facing view of upper foreshore at TRP 11 (1m scale).



Plate 29: East-facing view of inter-tidal zone at TRP 11.



Plate 30: Northwest-facing view, taken from LWM, at TRP 11.



Plate 31: East-facing view of inter-tidal zone at TRP 12.



Plate 32: North-facing view of inter-tidal zone at TRP 12.



Plate 33: South-facing view of upper foreshore at TRP 13 (1m scale).



Plate 34: South-facing view of inter-tidal zone and inlet where a tributary of the Bellanboy River discharges in to the bay at TRP 14.



Plate 35: East-facing view along LWM at TRP 14.



Plate 36: North-facing view bay taken from LWM, TRP 14.



Plate 37: South-facing view of upper foreshore at TRP 15 (1m scale).



Plate 38: East-facing view of inter-tidal zone at TRP15.



Plate 39: South-facing view of inter-tidal zone at TRP 15.



Plate 40: South-facing view of upper foreshore at TRP 16 (1m scale).



Plate 41: East-facing view of inter-tidal zone at TRP 16.



Plate 42: Northwest-facing view of inter-tidal zone at TRP 16; tender boat in background.



Plate 43: East-facing view of upper foreshore at TRP 17 (1m scale).



Plate 44: South-facing view of upper foreshore and inter-tidal zone at TRP 17 (1m scale).



Plate 45: West-facing view of inter-tidal zone at TRP 17 (1m scale).



Plate 46: West-facing view of Feature 1, located along the upper limit of the inter-tidal zone (1m scale ranging rods).



Plate 47: North-facing view of Feature 2, ruined boat house, located along the upper foreshore (1m scale ranging rods).



Plate 48: North-facing view of Feature 2, ruined boat house and associated dwelling (1m scale ranging rods).



Plate 49: Shot of SS12, Seaweed covered Breeze-block and small scour hole.



Plate 50: Shot of SS16, Fragment of Iron (machine part) with scour hole and snagged mono-filament netting



Plate 51: Shot of SS25, Dog Hutch located within large scour hole.