

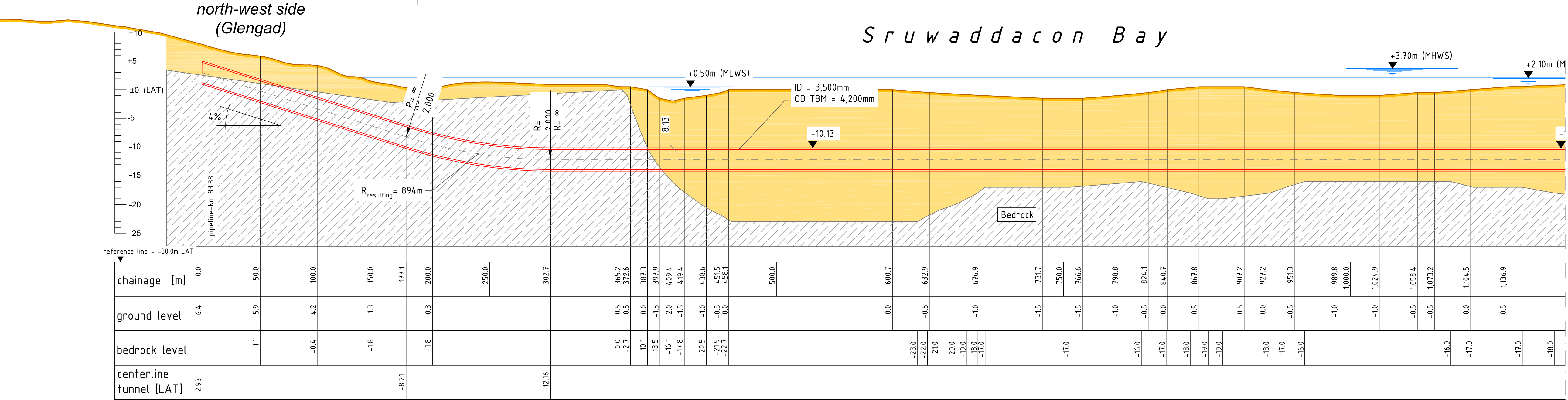
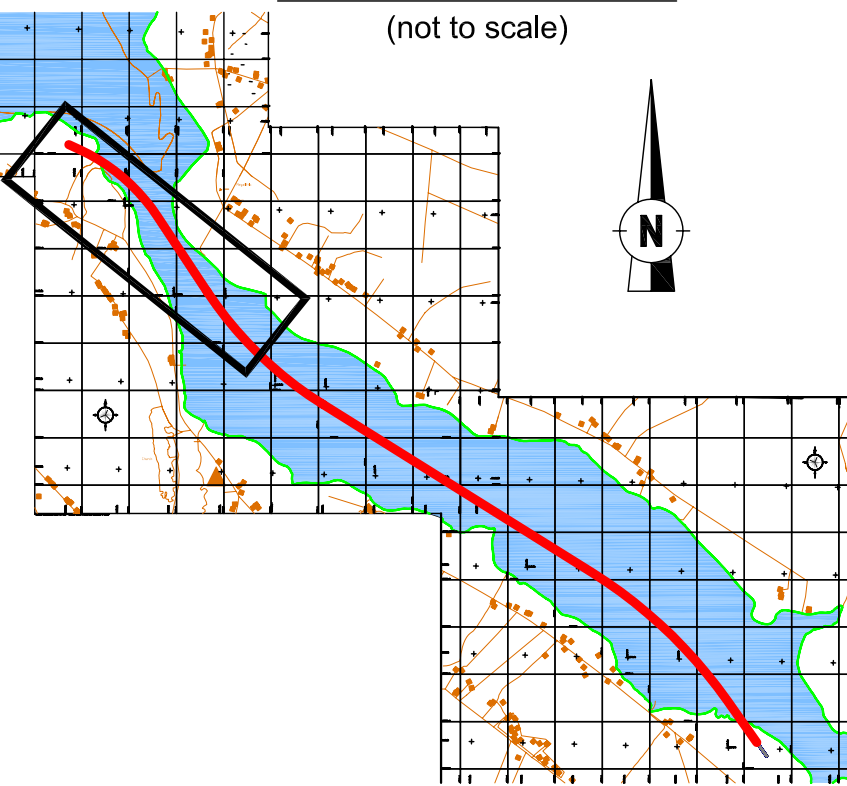
**GEODETIC NOTES:**

Projection Transverse Mercator  
Latitude of Origin 53° 30' 00" North  
Longitude of Origin 8° 00' 00" West  
False Easting 200,000 metres  
False Northing 250,000 metres  
Scale Factor 1.000035  
Ellipsoid Modified Airy  
Geodetic Datum Irish Map Grid 1975 (IMG)

Datum Transformation: From WGS84 to Irish Map Grid 1975 (IMG)

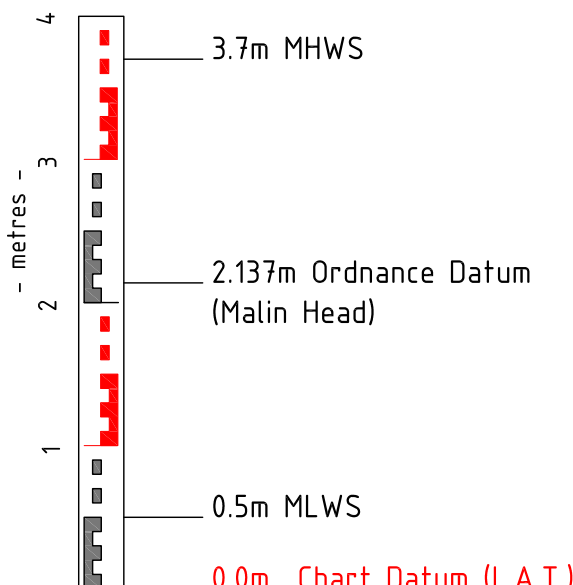
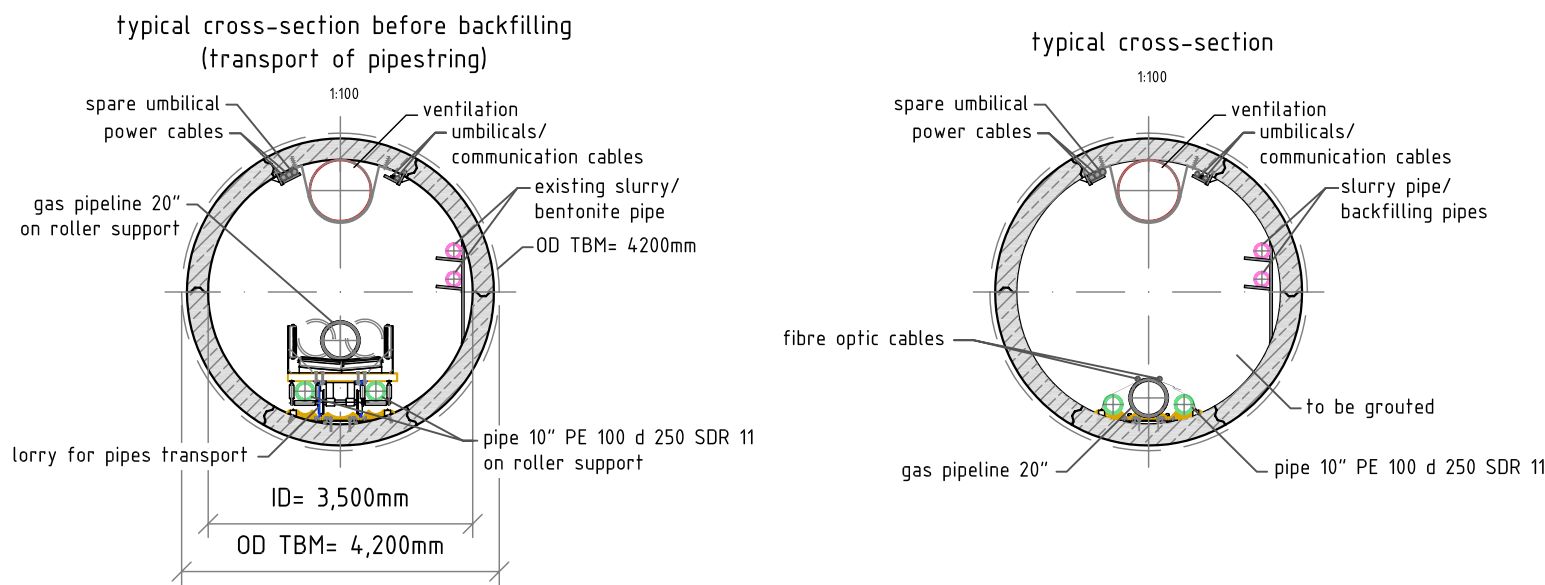
dX (m) = -482.527053m  
dY (m) = +130.596312m  
dZ (m) = -564.551239m  
Rotation X (secs) = 1.04200065"  
Rotation Y (secs) = 0.21399681"  
Rotation Z (secs) = 0.63100108"  
Scale Factor (ppm) = +8.14993358



**LOCATION MAP**



**GENERAL NOTES:**

- Survey conducted by Osiris Projects aboard MV 'Eagle' from 10th June to 3rd August 2007
- Seismic velocity of 1,700m/s was used for seismic reflection interpretation
- Isopachyte contours denote thicknesses of ALL sediments overlying bedrock. These sediments are interpreted as mainly sands and gravels of glacial or fluviu - glacial origin. They may also contain peaty horizons and occasional boulders.
- Isopachyte, bathymetry & land survey contours see Osiris Projects drawings C7009a-03a to d and C7009a-03a to c
- All depths are in metres and are reduced to Chart Datum, using secondary port of Broadhaven.
- In general, refraction data indicates bedrock to be between 0.5m and 2.0m deeper than reflection (boomer) data.
- The vertical alignment may vary between a minimum cover of 5.5m and a maximum depth of 10m below the indicated centreline.



3	Layout umbilicals			04.05.2010	RBL	04.05.2010	TJA	
2	Editorial changes			23.04.2010	RBL	23.04.2010	TJA	
1	For Planning			20.04.2010	RBL	20.04.2010	TJA	
rev.	changes			date	created	date	checked	
design:	 de la Motte & Partner GmbH Beratung, Planung, Bauüberwachung Bismarck 11 / 21455 Hornbek Tel: 040 21 11 65 90 / Fax: 040 21 11 65 929 E-Mail: mail@delamotte-partner.de Internet: www.delamotte-partner.de	project:	CORRIB ONSHORE PIPELINE SRUWADDACON BAY CROSSING  Segment Lining Tunnel				client:	
title:	top view and longitudinal section SHEET 1 of 4	2010	date	name	scale:	drawing no.:	revision	
		created:	13.04.	Bluhma	Hz. 1:2000 Vt. 1:400	DG 0401	3	
		checked:	13.04.	Jaguttis				
		approved:						
The author reserves all rights for this drawing. Without prior written consent this drawing may not be reproduced, disclosed neither forwarded to third parties nor is the further use in subsequent planning stages in an altered state permitted.								