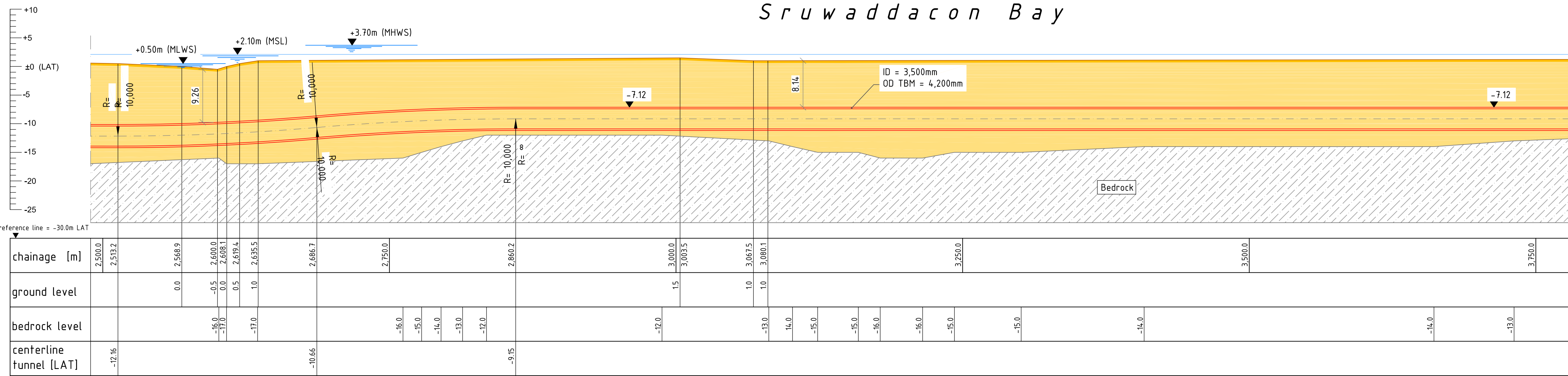


TYPICAL LONGITUDINAL SECTION

HZ. 1 : 2000 / VT. 1 : 400



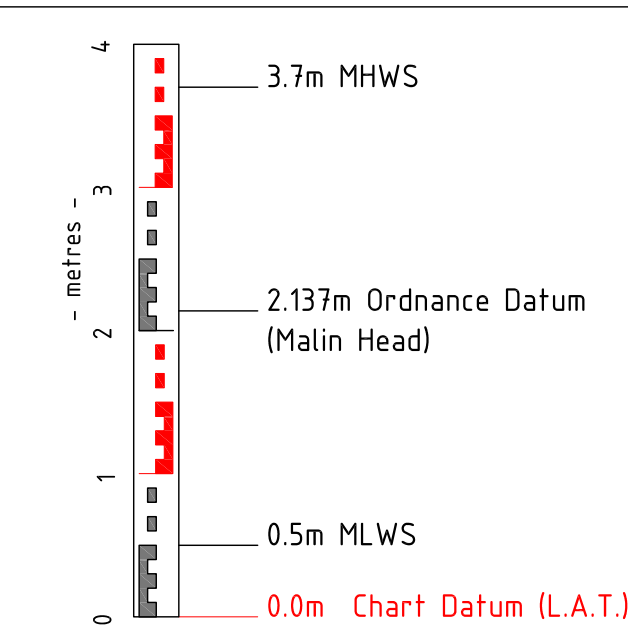
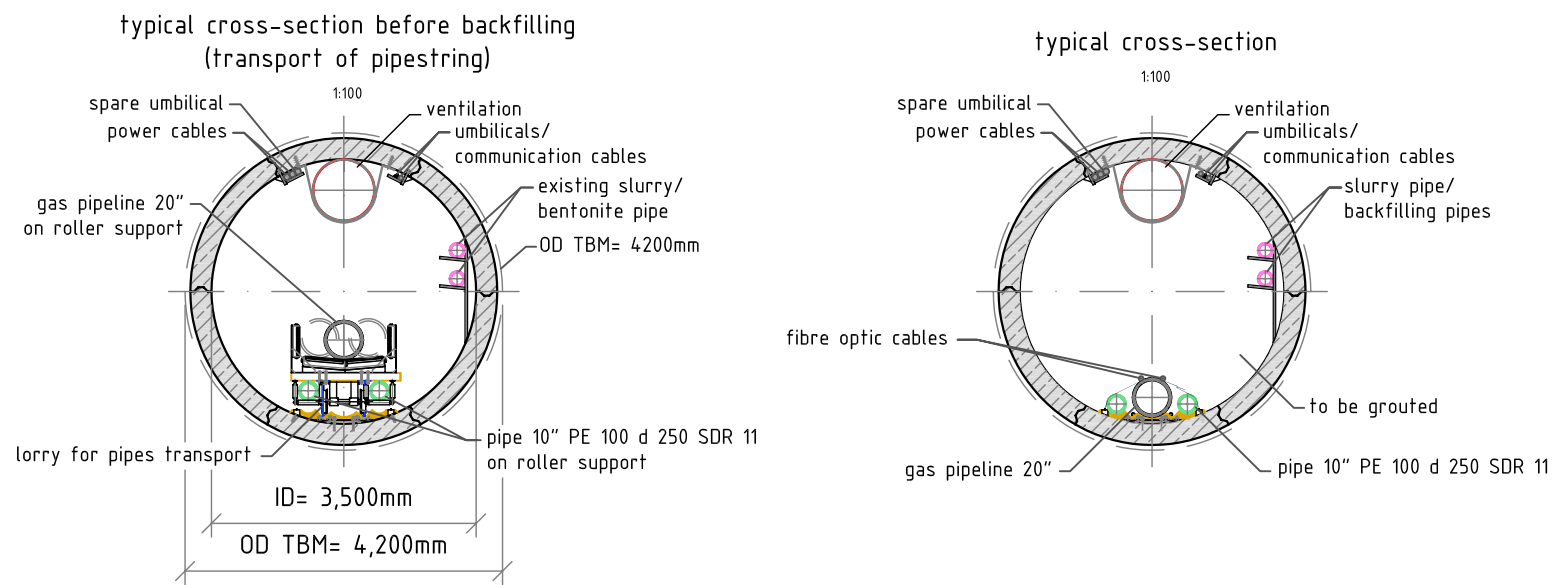
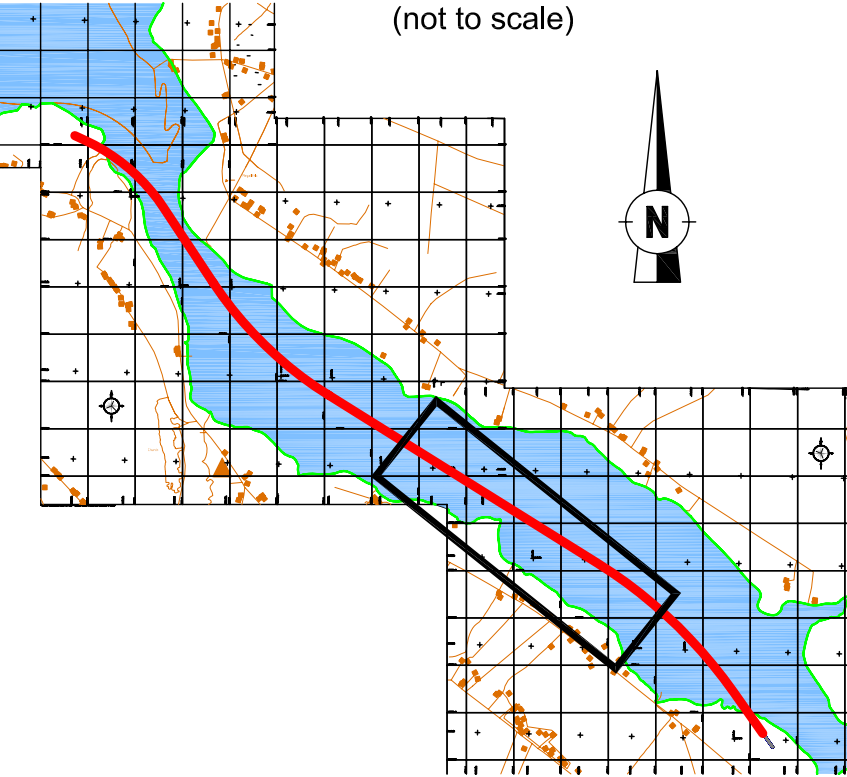
GEODETIC NOTES:

Projection Transverse Mercator
Latitude of Origin 53° 30' 00" North
Longitude of Origin 8° 00' 00" West
False Easting 200,000 metres
False Northing 250,000 metres
Scale Factor 1.000035
Ellipsoid Modified Airy
Geodetic Datum Irish Map Grid 1975 (IMG)

Datum Transformation: From WGS84 to Irish Map Grid 1975 (IMG)



dX (m) = -482.527053m
dY (m) = +130.596312m
dZ (m) = -564.551239m
Rotation X (secs) = 1.04200065"
Rotation Y (secs) = 0.21399681"
Rotation Z (secs) = 0.63100108"
Scale Factor (ppm) = +8.14993358

LOCATION MAP



GENERAL NOTES:

- Survey conducted by Osiris Projects aboard MV 'Eagle' from 10th June to 3rd August 2007
- Seismic velocity of 1,700m/s was used for seismic reflection interpretation
- Isopachyte contours denote thicknesses of ALL sediments overlying bedrock. These sediments are interpreted as mainly sands and gravels of glacial or fluviu - glacial origin. They may also contain peaty horizons and occasional boulders.
- Isopachyte, bathymetry & land survey contours see Osiris Projects drawings C7009a-03a to d and C7009a-03a to c
- All depths are in metres and are reduced to Chart Datum, using secondary port of Broadhaven.
- In general, refraction data indicates bedrock to be between 0.5m and 2.0m deeper than reflection (boomer) data.
- The vertical alignment may vary between a minimum cover of 5.5m and a maximum depth of 10m below the indicated centreline.

3	Layout umbilicals			04.05.2010	RBL	04.05.2010	TJA
2	Editorial changes						
1	For Planning			20.04.2010	RBL	20.04.2010	TJA
rev.		changes		date	created	date	checked
design:	 de la Motte & Partner GmbH Berliner Platz · Buchenvarzhung Rinkensweg 11 / 21465 Rönneke Tel.: 040 21 11 65 90 / Fax : 040 21 11 65 929 E-Mail : mail@delamotte-partner.de Internet : www.delamotte-partner.de			project:		client:	
				CORRIB ONSHORE PIPELINE SRUWADDACON BAY CROSSING Segment Lining Tunnel			
title:	top view and longitudinal section SHEET 3 of 4		2010	date	name	scale:	drawing no.:
			created:	13.04.	Bluhma	HZ. 1:2000	
			checked:	13.04.	Jagutis	Vt. 1:400	
			approved:				
The author reserves all rights for this drawing. Without prior written consent this drawing may not be reproduced, disclosed neither forwarded to third parties nor is the further use in subsequent planing stages in an altered state permitted.							
				drawing no.: DG 0403		revision: 3	